



THURSDAY 1ST MAY 2025
SALE OF CALVES & STIRKS,
MAY DAY SHOW AND SALE OF DAIRY CATTLE
FOLLOWED BY SALE OF EWES WITH LAMBS AT FOOT

CALVES & STIRKS – 33

“May Day May Day”

Today's Sale requiring emergency services to control the heat in the calf ring as trade hits another level.

Top today at £1360 for an 8-month-old Limousin X Bullock for Messrs RR & G Bainbridge, Belmont Farm, and Inra 95 Bulls to £1300 for RG & W Whitfield Ltd, Balladoyle Farm.

Weaned calves to £830 for Charolais Bulls from WJ Wannop, Waverton House, Wigton and Heifers to £680 from the same home.

Milk Calves to £700 for Charolais Bulls from Messrs Harrington, Flatt Bank.

More Calves needed as many purchasers leaving empty handed, please contact David Bowman on 07721 616786.

LEADING AVERAGES

Name	Total Heads	£ Average
Messrs RR & G Bainbridge, Belmont Farm	2	£1230.00
JH & AW Paisley, Micklethwaite Farm	2	£1210.00
RG & W Whitfield Ltd, Balladoyle Farm	7	£1068.57
JH & MJ Jefferson, High Pow	11	£1021.82
Gerrard House Farm Ltd, Gerrard House	1	£880.00

Limousin Steer Stirk £1360 Belmont Farm (Bainbridge) £1000 High Pow (Jefferson) £920 Balladoyle Farm (Whitfield)

Limousin Bull Stirk £1200 Micklethwaite Farm (Paisley) £970 x 2 High Pow (Jefferson)

Limousin Heifer Stirks £1050 (2) £1020 High Pow (Jefferson) £1040 Balladoyle Farm (Whitfield)

Limousin Heifer Calves £600 x 2 Waverton House (Wannop)

Inra 95 Steer Stirk £1300 £1180 Balladoyle Farm (Whitfield)

Charolais Steer Stirks £1220 Micklethwaite Farm (Paisley)

Charolais Bull Calves £830 £610 Waverton House (Wannop) £700 Flatt Bank (Harrington)

Charolais Heifer Calves £680 Waverton House (Wannop) £660 £610 Flatt Bank (Harrington)

British Blue Steer Stirks £1120 Balladoyle Farm (Whitfield) £1110 (3) High Pow (Jefferson)

British Blue Heifer Stirks £970 £950 Balladoyle Farm (Whitfield) £970 High Pow (Jefferson)

British Blue Bull Calves £690 £640 Flatt Bank (Harrington)





HOPE'S AUCTIONEERS

www.hopesauction.co.uk

Livestock & General Auctions,
Surveyors & Land Agents

T: 016973 42202

E: auctioneers@hopesauction.co.uk

Hope's Auction Co. Ltd.

Syke Road, Wigton, Cumbria, CA7 9NS

Hereford Bull Stirk £1100 Belmont Farm (Bainbridge) £880 High Pow (Jefferson)

Aberdeen Angus Bull Stirks £880 Gerrard House (Gerrard House Farm Ltd)

DAIRY CATTLE – 12

A super entry of Cows and Heifers trading strongly as the 1st of the month packs a punch, selling to £3150 for a Norwegian Red Cross Heifer giving 35 litres from How End Farms. The pre-sale show ably judged by Mr A Peile, Yew Tree Farm, who secured a 48kg 2nd Calver from Messrs Swainson as his Champion and this super Applejax Cow sold for £3100. More could easily have been traded on a very fast trade that saw Heifers average £2849 and Cows (2nd-4th) average £2483.

Next Sale of Dairy Cattle will be held on Thursday 15th May, please contact David Bowman on 07721616786.

Norwegian Red Heifer £3150 £2850 x 2 £2650 x 2 How End Farms (Howend)

Holstein Heifer £3100 £2700 £2500 £1950 How End Farms (Howend)

Holstein Cow £2600 £2450 £2400 How End Farms (Howend)

EWES WITH LAMBS AT FOOT

Bigger entry forward with a greater proportion of commercial sheep finding ready enquiry, with all sheep good to sell to a top of £172 on three occasions for Messrs Ramsay, Dockray Hall.

Our next Sale will be our Spring Show and Sale of Hogs and Shearlings with Lambs at Foot. Please contact David Fearon on 07500173273

Texel Ewes with Singles - £172 (2) £165 £160 Dockray Hall (Ramsay) £110 Lazonby Estates (Lazonby Manor)

Texel Hogg with Singles - £172 £162 £152 £150 £146 £122 Dockray Hall (Ramsay)

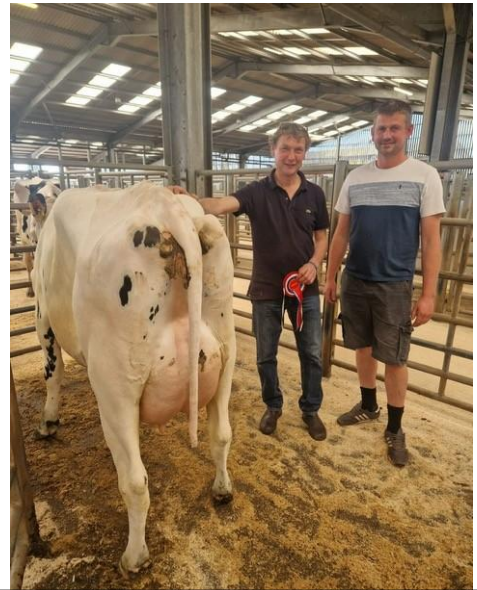
Beltex Shearlings with Singles - £152 £148 £114 £110 School Farm (Wannop)

Texel Shearlings with Singles - £150 Dockray Hall (Ramsay) £150 £130 Homilton Farm (Hickson)

Beltex 2 Shear with Singles - £150 Buttermere Close (Dunn)

Suffolk Hogg with Singles £146 Dockray Hall (Ramsay)

Texel Shearling with Twins - £132 £124 £123 Homilton Farm (Hickson)



May Day Dairy Champion 2025

This cracking Cow which later sold to £3100 here with, left John Swainson, How End Farms and Right Judge Ashley Peile, Yew Tree Farm



May Day Reserve Champion 2025

This super Heifer, later sold to £2850 with owner John Swainson and Judge Ashley Peile



Stay Connected   

Hope's Auction Company Limited - Registered in England: 052362.
Registered address: Syke Road, Wigton, Cumbria, CA7 9NS. VAT Reg. No. 256 4393 42.



HOPE'S
AUCTIONEERS

www.hopesauction.co.uk

Livestock & General Auctions,
Surveyors & Land Agents

T: 016973 42202

E: auctioneers@hopesauction.co.uk

Hope's Auction Co. Ltd.

Syke Road, Wigton, Cumbria, CA7 9NS

Suffolk Shearling with Singles £110 School Farm (Wannop)

Texel Ewe with Twins - £110 School Farm (Wannop)

Texel 2 Shear with Singles - £118 (2) £114 £112 Buttermere Close (Dunn)

Mules Ewes with Triplets - £78 Sea View (Lamb)



May Day Champion 2025 sold to £3100



Stay Connected   

Hope's Auction Company Limited - Registered in England: 052362.
Registered address: Syke Road, Wigton, Cumbria, CA7 9NS. VAT Reg. No. 256 4393 42.