



**TUESDAY 27<sup>TH</sup> FEBRUARY 2024**  
**SALE OF PRIME CATTLE AND PRIME HOGGS**

**PRIME CATTLE – 29**

Prime Cattle a similar trade to last week, with a good range of types and meat, something for all purchasers. Topping today at 315.5pkg (£2126.47) a cracking Limousin Heifer, weighing 674kg from T Pearson & Son, High Plasketlands, purchased by Paul Harrison for his King Street Butchers Shop, Wigton  
Top gross Heifer of the day at £2181.27 (305.5pkg) for a Charolais, weighing 714kg from J Dixon & Sons Ltd, Lesson Hall and purchased by Jamie Chapman for his Wishaw Butchers Shop.  
Steers sold to 291.5pkg (£2162.93) for a Limousin, weighing 742kg from R Miller Ltd, Arkleby Hall, who also took the top gross steer at £2249.74 (285.5pkg) for a Blonde, weighing 788kg,  
Bulls sold to 257.5pkg (£1601.65) for a 14-month-old Limousin, weighing 622kg from DI & LV Bowman, Limekiln Nook Farm, with the top gross Bull selling to £1728.32 (245.5pkg) for a 17-month-old Montebeliard, weighing 704kg from I Grainger, Kiln Close  
More Cattle required for the next sale, please contact David Fearon on 07500 173273.

**Overall Averages -    Bullocks 284.25pkg    Heifers 292.39pkg    Bulls 244.71pkg**

Bullocks	Sold	Average pkg	Max pkg.
551-650kg	1	269.50	269.50
651+kg	3	288.13	291.50

Heifers	Sold	Average pkg	Max pkg.
591+kgs	15	292.39	315.50

Bulls	Sold	Average pkg	Max pkg.
370-550kg	1	223.50	223.50
551-650kg	7	247.38	257.50
651+kg	2	245.02	245.50

**Top 4 Bullock**

Pence per kg	Weight	Breed	Vendor
291.5	742	Limousin	R Miller Ltd, Arkleby Hall
287.5	669	Limousin	Messrs Bowe, Mechi
285.5	788	Blonde	R Miller Ltd, Arkleby Hall
269.5	578	Limousin	TB Stamper & Sons, Rose Farm

**Top 5 Heifers**

Pence per kg	Weight	Breed	Vendor
315.5	674	Limousin	T Pearson & Son, High Plasketlands
305.5	714	Charolais	J Dixon & Sons Ltd, Lesson Hall
305.5	627	Limousin	T Pearson & Son, High Plasketlands
297.5	657	Limousin	RE Miller, West Farm
297.5	639	Limousin	Messrs Bowe, Mechi

**Top 5 Bulls**

Pence per kg	Weight	Breed	Vendor
257.5	622	Limousin	DI & LV Bowman, Limekiln Nook Farm
254.5	623	Limousin	DI & LV Bowman, Limekiln Nook Farm
252.5	592	Limousin	DI & LV Bowman, Limekiln Nook Farm
250.5	601	Limousin	DI & LV Bowman, Limekiln Nook Farm
245.5	704	Montebeliard	I Grainger, Kiln Close





## PER KILO

### **BULLOCKS – 4**

**Limousin** 291.5 Arkleby Hall (Miller) 287.5 Mechi (Bowe) 269.5 Rose Farm (Stamper)

**Blonde** 285.5 Arkleby Hall (Miller)

### **HEIFERS – 15**

**Limousin** 315.5 305.5 293.5 High Plasketlands (Pearson) 297.5 293.5 Mechi (Bowe) 297.5 287.5 West Farm (Miller) 294.5 285.5 Rose Farm (Stamper) 285.5 Sea View (Park)

**Charolais** 305.5 Lesson Hall (Dixon) 283.5 Rose Farm (Stamper)

**British Blue** 277.5 Lesson Hall (Dixon) 259.5 Kiln Close (Grainger)

### **BULLS – 10**

**Limousin** 257.5 254.5 252.5 250.5 241.5 Limekiln Nook Farm (Bowman) 244.5 Gate Ghyll (Robinson)

**Montebelaïrd** 245.5 243.5 223.5 Kiln Close (Grainger)

**Friesian** 230.5 Kiln Close (Grainger)

## PER HEAD

### **BULLOCKS – 4**

**Blonde** £2249.74 Arkleby Hall (Miller)

**Limousin** £2162.93 Arkleby Hall (Miller) £1923.38 Mechi (Bowe) £1557.71 Rose Farm (Stamper)

### **HEIFERS – 15**

**Charolais** £2181.27 Lesson Hall (Dixon) £1882.44 Rose Farm (Stamper)

**Limousin** £2126.47 £1915.49 £1857.86 High Plasketlands (Pearson) £1954.58 £1742.25 West Farm (Miller) £1921.42 £1887.75 Rose Farm (Stamper) £1901.03 £1837.31 Mechi (Bowe) £1787.23 Sea View (Park)

**British Blue** £2111.78 Lesson Hall (Dixon) £1785.36 Kiln Close (Grainger)

### **BULLS – 10**

**Montebelaïrd** £1728.32 £1480.48 £1229.25 Kiln Close (Grainger)

**Limousin** £1601.65 £1585.54 £1505.51 £1494.80 £1422.44 Limekiln Nook Farm (Bowman) £1596.59 Gate Ghyll (Robinson)

**Friesian** £1341.51 Kiln Close (Grainger)





## PRIME HOGGS – 829

A fantastic show of Hogs today with plenty of meat on offer and trade showing an increase in trade on last week, averaging 374.21pkg and an SQQ of 387.0pkg, all weight ranges taking a good lift in price, with the heaviest weights 45.6-52kg +21.87pkg on the week.

The 32.1-39kg weight section topping at a tremendous 507.7pkg (£198) for a single Beltex Hogg, weighing 39kg from GEH & SJ Stoddart, Hillside. The next five Hogs selling to 500.0pkg (£190) on two occasions, firstly for a single Beltex from RE Miller, West Farm and secondly for a pen of four hogs from R Hall & Son, Inglewood Edge, both lots weighing 38kg. Top gross of the day at £210 (456.5pkg) went to a single 46kg Beltex Hogg from RN Scott, West Micklethwaite and purchased by RJ Harrison & Sons Ltd, for their King Street Butchers Shop, Wigton.

Top average place of the Day was secured by David Batty, Cobble Croft with his run of 15 Dutch Texels averaging a tremendous £186.60, with his prices ranging from a top of £208 to £165.

More Hogs required next week, please contact David Bowman on 07721 616786

## **Overall Averages – Prime Hogs 374.21pkg**

Prime Hogs	Sold	Average pkg	Max pkg.
32.1-39kgs	132	419.07	507.70
39.1-45.5kgs	462	379.06	495.20
45.6-52kgs	235	347.80	456.50

### **Top Five Hogs Averages £:**

£186.60 for 15 from D Batty, Cobble Croft  
 £184.20 for 22 from Messrs RE Miller, West Farm  
 £183.30 for 28 from Messrs Steel, The Laurels Farm  
 £178.63 for 43 from DI & LV Bowman, Limekiln Nook Farm  
 £178.57 for 7 from Messrs Paterson, Thistle Bottom

### **Top Five Hogs £:**

£210 for 1 weighing 46kg from RN Scott, West Micklethwaite  
 £208 for 1 weighing 42kg from D Batty, Cobble Croft  
 £200 for 1 weighing 65kg from DI & LV Bowman, Limekiln Nook Farm  
 £199.80 for 1 weighing 49kg from Messrs Steel, The Laurels Farm  
 £199 for 3 weighing 44.67kg from Messrs Steel, The Laurels Farm

### **Top Five Hogs pkg:**

507.7 for 1 weighing 39kg from GEH & SJ Stoddart, Hillside  
 500.0 for 1 weighing 38kg from RE Miller, West Farm  
 500.0 for 4 weighing 38kg from R Hall & Son, Inglewood Edge  
 495.2 for 1 weighing 42kg from D Batty, Cobble Croft  
 492.1 for 1 weighing 38kg from RN Scott, West Micklethwaite

## PER HEAD

**Beltex** £210 £191 £190 £187 £184.5 £177 £176 £156 West Micklethwaite (Scott) £198 £196 £166 £155 Hillside (Stoddart) £196 £190.5 £190 x 2 £182 £180 £179 West Farm (Miller) £194 £190 £185 £157 £153 Inglewood Edge (Hall) £192 £189 £182.5 £177 £174 £169 £161.5 Lairdlaugh (Fisher) £174 x 2 £173.5 £168 £162 £155 Oakwood Farm (Nixon) £173.5 £170 Lessonhall (Steel) £169 £159 £157 Thethwaite Farm (Bell) £162 £159.5 £152 £150 Rosemount (Jackson)

**Dutch Texel** £208 £198 £192 £190 £187 £179 £165 Cobble Croft (Batty) £199.8 £199 £194 £190 £186.5 £183 £177 £165.5 £159 The Laurels Farm (Steel)



David Batty sold a run of 15 Dutch Texels to £208 (495.5pkg) and an average of £186.60





**Texel** £200 £197 £194 £190 £189 £182 £180 x 2 £178 x 2 £170 £160  
 Limekiln Nook Farm (Bowman) £198 £183 £175 £161 Thistle Bottom  
 (Paterson) £195 £194 £184 £178 £177.5 £176 £175 £167 x 2 £163.5  
 £159 £158.5 £156.5 £154.5 £153.5 £150 Allerby Hall (Miller) £190  
 £187 £174 £171 £162.5 £154.5 Belmont Farm (Bainbridge) £186  
 £166 £155 Broomhills Farm (Marrs) £183 High Blaitwaite (Spark)  
 £180 Lessonhall (Steel) £178 £173 Heartsome Cottage (Graham &  
 Fearon) £178 West Farm (Miller) £177 £167 £159 £155 Westward  
 Parks (Brockbank) £176.5 £176 £175 £169 £159.5 £155 £153.5  
 Heggale Lane (Richardson) £167 £164.5 £161 £160 £158 x 2  
 Wellington Farm (Harrington) £163 £160 £157 £156 £152 £151.5  
 £151 £150 Hill House (Harrison) £156 Rosemount (Jackson) £151  
 Hillside (Stoddart)



Messrs Paterson, Thistle Bottom sold a run of 7 Texel Hoggs to £198 (402.5pkg) and an average of £178.57

**Charollais** £190 £187 £183 £182 £181 £175 Kiln Close (Grainger) £170 £150 Lessonhall (Steel)

**Blue Texel** £180 West Farm (Miller)

**Suffolk** £174 £170 £169 Lessonhall (Steel) £172 £143 Broomhills Farm (Marrs) £167 £159 £157 x 2 Hill House (Harrison)

**Hampshire** £153 £151 Hill House (Harrison)

**Mule** £151.5 Broomhills Farm (Marrs) £138.5 Hill House (Harrison)

**Herdwick** £96 Rosemount (Jackson)

### PER KILO

**Beltex** 507.7 445.5 412.4 Hillside (Stoddart) 500.0 490.0 469.2 439.0 438.6 431.8 402.2  
 West Farm (Miller) 500.0 474.4 459.5 431.1 413.5 Inglewood Edge (Hall) 492.1 465.8  
 463.4 456.5 444.2 439.3 434.6 West Mickethwaite (Scott) 470.3 460.1 446.9 427.2 425.7  
 420.3 419.3 Oakwood Farm (Nixon) 467.6 444.7 418.7 Thethwaite Farm (Bell) 437.5 427.8  
 426.5 424.8 415.5 414.8 Lairdlaugh (Fisher) 401.6 Lessonhall (Steel)

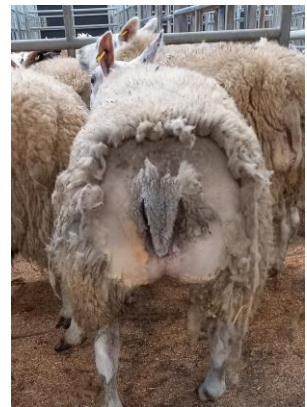
**Dutch Texel** 495.2 471.1 468.3 467.5 450.0 Cobble Croft (Batty) 445.5 412.8 409.9  
407.8 404.3 402.3 The Laurels Farm (Steel)

**Charollais** 435.9 422.8 413.6 399.3 392.3 388.8 Kiln Close (Grainger) 352.9 337.8  
Lessonhall (Steel)

**Texel** 428.6 395.6 391.2 356.0 Limekiln Nook Farm (Bowman) 419.4 373.1 371.6 369.3 366.3 359.6 Hill House (Harrison)  
 419.0 374.7 361.0 357.7 356.8 Broomhills Farm (Marrs) 418.2 407.3 406.3 395.9 394.4 392.0 387.8 386.7 371.6 362.1  
 362.0 359.4 357.7 Allerby Hall (Miller) 411.8 384.1 381.0 370.0 364.7 361.2 358.4 Heggale Lane (Richardson) 402.5 360.0  
 Thistle Bottom (Paterson) 389.1 West Farm (Miller) 384.3 358.5 356.6 355.1 x 2 Belmont Farm (Bainbridge) 383.0  
 Lessonhall (Steel) 379.5 369.7 365.9 363.6 359.1 355.1 Wellington Farm (Harrington) 367.5 Yew Tree Farm (Peile) 365.0  
 Westward Parks (Brockbank) 363.0 Bothel Parks (Bowe) 357.7 Thethwaite Farm (Bell) 355.3 Hillside (Stoddart)

**Blue Texel** 383.0 West Farm (Miller)

**Suffolk** 371.1 363.0 x 2 327.8 Hill House (Harrison) 358.0 340.0 Broomhills Farm (Marrs) 346.9 341.4 328.3 Lessonhall  
(Steel)



R Hall & Son, Inglewood Edge sold a run of 17 Hoggs to £194 (500.0pkg) and an average of £173.06





**Hampshire** 343.2 312.2 Hill House (Harrison)

**Mule** 329.3 Broomhills Farm (Marrs) 325.1 Hill House (Harrison)

**Herdwick** 202.1 Rosemount (Jackson)

### **PRIME EWES – 48**

What a show of Prime Ewes forward today, with strength and meat in abundance, pushing the trade way beyond expectations.

Topping at a terrific £212 and £200, two single Texel Ewe from Pat Rae, Greenah Hall, whose run of six ewes averaged a very respectable £180.33, closely followed by another single Ewe selling to £200 from Keith Hodgson, Prospect House taking his average for two sold to £186. Beltex Ewes sold to £186 for M & L Peile, Holly Barn, Suffolks selling to £157 for a pen of three from DG & JA Bell, Low Blaitwaite and Mules selling to £120 for a pair from GE Rudd, Jenkin Cross Beltex Rams topping at £151 for M & L Peile, Holly Barn.

More Ewes required each week, contact David Bowman on 07721 616786

**Texel** £212 £200 £196 £164 £154 Greenah Hall (Rae) £200 £172 Prospect House (Hodgson) £198 £170 £154 Dockray Hall (Ramsay) £189 £174 £148 Mechi (Bowe) £184 £175 Kirkland Guards (Cape) £175 x 2 £149 Low Blaitwaite (Bell) £160 Buttermere Close (Dunn) £150 Bothel Parks (Bowe)

**Beltex** £186 £179 £176 £134 Holly Barn (Peile) £136 Mechi (Bowe)

**Dutch Texel** £166 £150 £134 Cobble Croft (Batty)

**Suffolk** £157 Low Blaitwaite (Bell) £156 Greenah Hall (Rae) £114 Jenkin Cross (Rudd)

**Mule** £120 Jenkin Cross (Rudd) £120 Buttermere Close (Dunn)

### **RAMS - 13**

**Beltex** £151 Holly Barn (Peile) £107 Heartsome Cottage (Graham & Fearon)

**Texel** £146 £139 x 2 £134 x 2 Heartsome Cottage (Graham & Fearon)

