



TUESDAY 12TH DECEMBER 2023
SALE OF PRIME CATTLE AND PRIME LAMBS

PRIME CATTLE – 20

This week's sale of Prime Cattle ran in conjunction with the Christmas Show and Sale of Prime Bulls. The pre-sale show was very aptly judged by Mr. Bill Howard, Dotland, who placed his Champion Bull to Lot 815, a 771kg, 19-month-old Limousin, which went on to sell for 290.5pkg (£2239.76), from WE Callion & Son, Lodge Farm, Great Clifton. Reserve Champion was placed to Lot 816, again from Messrs WE Callion & Son, Lodge Farm, this time with an 824kg, 23-month-old Limousin Bull, later selling to 279.5pkg (£2303.08). Topping the market today, a 20-month-old Charolais Heifer, weighing 733kg, selling to £2312.62 (315.5pkg) from JJ Crichton, Loughrigg, purchased by local butcher Paul Harrison for his King Street Butchers Shop, Wigton. The top pence per kilo section went to P & A Jarman, Brow Top Farm, Branthwaite, with a 20-month-old Limousin Heifer, weighing 540kg and selling to 317.5pkg (£1714.50). More prime cattle required for the next sale on Thursday 28th December, please contact David Fearon on 07500 173273.

CHRISTMAS PRIME BULL SHOW RESULTS

CLASS	1 ST PRIZE	2 ND PRIZE
BEEF BULL	Lot 815 – WE Callion & Son, Lodge Farm, Great Clifton	Lot 816 – WE Callion & Son, Lodge Farm, Great Clifton
DAIRY BRED BULL	Lot 817 – J & J Messenger, Adamgill	Lot 818 – J & J Messenger, Adamgill
CHAMPION	Lot 815 – WE Callion & Son, Lodge Farm, Great Clifton - £2239.76 (290.5pkg)	
RESERVE CHAMPION	Lot 816 – WE Callion & Son, Lodge Farm, Great Clifton - £2303.08 (279.5pkg)	

Overall Averages - Heifers 301.70pkg Bulls 256.05pkg

Heifers	Sold	Average pkg	Max pkg.
501-590kgs	2	310.36	317.50
591+kgs	11	300.37	315.50

Bulls	Sold	Average pkg	Max pkg.
370-550kgs	1	279.50	279.50
551-650kgs	1	242.50	242.50
651+kgs	5	254.55	290.50

Top 5 Heifers

Pence per kg	Weight	Breed	Vendor
317.5	540	Limousin	P & A Jarman, Brow Top Farm
315.5	733	Charolais	JJ Crichton, Loughrigg
313.5	624	Limousin	Messrs Bowe, Mechi
311.5	609	Limousin	DA Harrison & Co, Hill House
307.5	671	Limousin	JJ Crichton, Loughrigg

Top 5 Bulls

Pence per kg	Weight	Breed	Vendor
290.5	771	Limousin	WE Callion & Son, Lodge Farm
279.5	824	Limousin	WE Callion & Son, Lodge Farm
279.5	535	Limousin	Messrs Bowe, Mechi
242.5	575	Limousin	Messrs Bowe, Mechi
225.5	548	Aberdeen Angus	J & J Messenger, Adamgill





PER KILO

HEIFERS – 13

Limousin 317.5 303.5 Brow Top Farm (Jarman) 313.5 301.5 Mechi (Bowe) 311.5 299.5 Hill House (Harrison) 307.5 Loughrigg (Crichton) 301.5 293.5 High Plasketlands (Pearson)

Charolais 315.5 Loughrigg (Crichton)

British Blue 295.5 High Plasketlands (Pearson) 285.5 281.5 Lesson Hall (Dixon)

BULLS - 7

Limousin 290.5 279.5 Lodge Farm (Callion) 279.5 242.5 Mechi (Bowe) 223.5 Adamgill (Messenger)

Aberdeen Angus 225.5 223.5 Adamgill (Messenger)

PER HEAD

HEIFERS – 13

Charolais £2312.62 Loughrigg (Crichton)

British Blue £2099.99 £1998.50 Lesson Hall (Dixon) £1823.24 High Plasketlands (Pearson)

Limousin £2063.33 Loughrigg (Crichton) £1956.24 £1802.97 Mechi (Bowe) £1944.68 £1802.09 High Plasketlands (Pearson)

£1904.82 £1897.04 Hill House (Harrison) £1714.50 £1705.67 Brow Top Farm (Jarman)

BULLS – 7

Limousin £2303.08 £2239.76 Lodge Farm (Callion) £1495.33 £1394.38 Mechi (Bowe) £1191.26 Adamgill (Messenger)

Aberdeen Angus £1235.74 £1137.62 Adamgill (Messenger)

PRIME LAMBS – 1126

Trade up on the week, with an increase in the average price of 8pkg, with the biggest lift going to the 39.1-45.5kg section +10.35pkg, selling to a maximum of 442.5pkg.

Selling to a top of £186 (422.7pkg) for a single Beltex Lamb, weighing 44kg from TA & A Jefferson, Aspatria Hall, with their run of 19 Lambs selling to an average of £158.68.

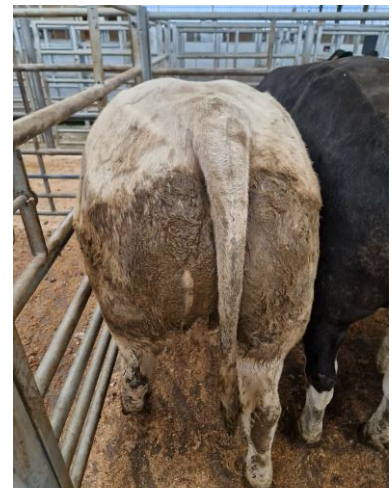
This good farming family also took the top pence per kilo section at 442.5pkg (£177) with another single Beltex Lamb, weighing 40kg.

Top average of the day went to Messrs W Robshaw, with their run of 19 tremendous Beltex Lambs averaging £163.96, their top lamb selling to £185 (420.5pkg) for a single lamb and 437.5pkg (£175) for a pen of 3 Lambs.

More lambs required for all classes, please contact David Bowman on 07721 616786



Topping today at 317.5pkg (£1714.50) this Limousin Heifer, weighing 540kg from P & A Jarman, Brow Top Farm



Topping today at £2312.62 (315.5pkg) this Charolais Heifer, weighing 733kg from JJ Crichton, Loughrigg and purchased by local butcher Paul Harrison for his King Street Butchers Shop, Wigton





Overall Averages – Prime Lambs 295.31pkg

Prime Lambs	Sold	Average pkg	Max pkg.
32.1-39kgs	64	302.89	400.00
39.1-45.5kgs	797	302.22	442.50
45.6-52kgs	236	279.42	371.50
Over 52kg	29	244.76	271.70

Top Five Lambs Averages £:

- £163.96 for 27 from Messrs W Robshaw, Beck House Farm
- £158.68 for 19 from TA & A Jefferson, Aspatria Hall
- £156.27 for 13 from WW Gate, Low Aketon
- £150.00 for 11 from D Batty, Cobble Croft
- £149.00 for 6 from P Rae, Greenah Hall

Top Five Lambs £:

- £186 for 1 weighing 44kg from TA & A Jefferson, Aspatria Hall
- £185 for 1 weighing 44kg from W Robshaw, Beck House Farm
- £177 for 1 weighing 40kg from TA & A Jefferson, Aspatria Hall
- £177 for 1 weighing 42kg from P Rae, Greenah Hall
- £176 for 1 weighing 44kg from W Robshaw, Beck House Farm

Top Five Lambs pkg:

- 442.5 for 1 weighing 40kg from TA & A Jefferson, Aspatria Hall
- 437.5 for 3 weighing 40kg from W Robshaw, Beck House Farm
- 422.7 for 1 weighing 44kg from TA & A Jefferson, Aspatria Hall
- 421.4 for 1 weighing 42kg from P Rae, Greenah Hall
- 420.5 for 1 weighing 44kg from W Robshaw, Beck House Farm

PER HEAD

Beltex £186 £177 £169 £162 £160 x 2 £159 £152 £151 x 2 Aspatria Hall (Jefferson) £185 £176 £175 x 2 £170 £166 £164 £160 £159 £156 £154 £151 Beck House Farm (Robshaw) £177 £160 £152 £143 Greenah Hall (Rae) £171 x 2 £160 £145 £144 £142 £140 Cardew Hall Farm (Musgrave) £167 £160.5 £158 £157 Low Aketon (Gate) £167 £156.5 £154 £152 £148 £143 West Micklethwaite (Scott) £162 £161 £150 £148 £144 West Farm (Miller) £153 £150 £148 £144 £140 Dufton House (Fisher) £150 £140.5 £140 Oakwood Farm (Nixon)

Dutch Texel £171 £152 £150 Cobble Croft (Batty)

Texel £150 £144 £138 £136 x 2 £135.5 x 2 £135 x 2 £134 £132.5 £131.5 £130 x 2 Allerby Hall (Miller) £149.5 £140 £136 Broomhills Farm (Marrs) £149 £142 £140 £134 x 2 High Hall (Thompson) £148 x 2 £132 £131 Greensyke Farm (Palmer) £146.5 £138 £134 Pasturewood (McCrone) £144.5 £133 West Farm (Miller) £144 £139.5 £136 £132 Thistle Bottom (Paterson) £144 Bustabeck (Fawcett) £143 £139 x 2 £134 x 2 £133.5 £130 Westward Parks (Brockbank) £143 £133 £132 £130 Hill House (Harrison) £142 Prospect Farm (Gray) £140 £135 £134 £132 Belmont Farm (Bainbridge) £140 £133 £130 The Thwaites (Dixon) £139 £136.5 £130 High House (Dickinson) £139 £135 Fairfield Farm (Fotheringham) £137 £136 Pasture House (Dowling) £137 £131 Mechi (Bowe) £137 Scales Demesne (Mashiter) £135 Hill Green Farm (Naylor) £133 £132 Howgill Farm (Brough) £130 Heggale Lane (Richardson)

Suffolk £132 £122 £110 Broomhills Farm (Marrs) £121 £119 x 3 £115.5 Hill House (Harrison) £120 The Thwaites (Dixon) £114 Scales Demesne (Mashiter)

Herdwick £113.5 Greensyke Farm (Palmer)



WW Gate, Low Aketon sold a run of 13 Beltex Lambs to a top of £167 and an average of £156.27.





Mule £112 Fairfield Farm (Fotheringham) £110.5 Broomhills Farm (Marrs)

Charolais £110.5 Stoneraise (Armstrong)

Black Faced £107 Cardew Hall Farm (Musgrave)

Hampshire £97 Carwath (Coulthard)

PER KILO

Beltex 442.5 422.7 390.2 380.0 372.4 372.1 367.4 355.3 353.3 Aspatria Hall (Jefferson) 437.5 420.5 400.0 397.7 385.5 377.8 377.3 369.8 368.5 359.5 350.0 Beck House Farm (Robshaw) 421.4 381.0 353.5 Greenah Hall (Rae) 412.0 372.1 371.7 Cardew Hall Farm (Musgrave) 402.4 394.6 360.9 357.1 Low Aketon (Gate) 400.0 397.2 389.5 377.1 West Micklethwaite (Scott) 381.2 374.4 West Farm (Miller) 367.8 Oakwood Farm (Nixon) 357.1 352.4 Dufton House (Fisher)

Texel 388.9 344.2 309.1 Broomhills Farm (Marrs) 365.9 326.5 319.0 318.6 316.6 315.9 314.6 314.0 306.9 306.7 300.0 Allerby Hall (Miller) 341.6 336.4 327.5 312.6 Greensyke Farm (Palmer) 341.5 305.3 The Thwaites (Dixon) 333.0 306.8 High Hall (Thompson) 329.2 300.0 Pasturewood (McCrone) 327.1 310.2 302.4 301.2 High House (Dickinson) 327.0 Hill House (Harrison) 318.6 Pasture House (Dowling) 315.8 310.0 Belmont Farm (Bainbridge) 314.0 Fairfield Farm (Fotheringham) 308.7 Prospect Farm (Gray) 306.4 Bustabeck (Fawcett) 304.7 Thistle Bottom (Paterson) 304.5 302.9 302.2 Westward Parks (Brockbank) 302.5 302.4 Heggale Lane (Richardson)

Dutch Texel 380.0 375.3 372.3 Cobble Croft (Batty)

Suffolk 281.1 272.1 259.4 254.5 240.1 Hill House (Harrison) 269.4 265.1 259.6 Broomhills Farm (Marrs) 266.7 The Thwaites (Dixon) 242.6 Scales Demesne (Mashiter)

Charolais 257.0 Stoneraise (Armstrong)

Mule 254.0 Broomhills Farm (Marrs) 245.8 Fairfield Farm (Fotheringham)

Herdwick 250.4 Greensyke Farm (Palmer)

Black Faced 248.8 Cardew Hall Farm (Musgrave)

Hampshire 223.0 Carwath (Coulthard)

PRIME EWES – 75

Fewer Ewes forward today, resulting in the trade being pushed up, showing an increase in the average of +31.58p per head.

Topping at £160, a single Texel Ewe from Messrs WL Musgrave & Sons, Cardew Hall Farm.

Swaledales selling to £60 for a pen of 17 from CP & JA Brough, West Park Farm.

More Ewes required each week, contact David Bowman on 07721 616786

Texel £160 Cardew Hall Farm (Musgrave) £142 Greenah Hall (Rae) £127 £114 Heggale Lane (Richardson) £120 £119 Fairfield Farm (Fotheringham) £120 Thethwaite Farm (Bell) £110 West Farm (Clark)



Messrs N Fisher, Dufton House sold a run of 16 Beltex Lambs to £153 (357.1pkg) and an average of £139.31.



Messrs JJ & CE Palmer, Greensyke Farm sold a run of 38 Lambs to £148 on two occasions (341.6pkg)





Suffolk £126 £113 Fairfield Farm (Fotheringham) £124 £101 Thethwaite Farm (Bell)

Mule £87 Fairfield Farm (Fotheringham) £72 Stoneraise (Armstrong)

Beltex £83 Croft House (Watson)

Cheviot £66 Thethwaite Farm (Bell)

Swaledale £60 West Park Farm (Brough) £60 Fairfield Farm (Fotheringham)

RAMS – 7

Texel £132 Grange Farm (Hayton) £129 Riggwood (Harrington)

Beltex £120 Riggwood (Harrington)

Leicester £100 Grange Farm (Hayton)



Left: Today's Champion Bull from Messrs WE Callion & Son, Lodge Farm, weighing 771kg and selling to 290.5pkg (£2239.76)

Right: Today's Reserve Champion Bull, again from Messrs WE Callion & Son, Lodge Farm, weighing 824kg and selling to 279.5pkg (£2303.08)

