



TUESDAY 31ST OCTOBER 2023

PRIME CATTLE – 23

Hopes saw another larger entry of prime cattle with a two-tiered show of quality and finish throughout. Meat and quality were very easily sold, ensuring vendors leaving highly delighted.

Top pence per kilo was achieved three times, firstly for a lovely light weighted heifer from D A Harrison, Hill House weighing in at 586kg being purchased by R J Harrison, King Street, Wigton. James Crichton, Loughrigg also taking joint top ppk with two tremendous Limousin X Heifers both selling for 321.5ppkg, the first heifer weighing 685kg resulting up at £2202.98 and being purchased by T Harrison Butcher and the second topping the lump sum weighing 703kg taking the top gross of £2260.15 being purchased by R J Harrison, King Street Butchers, Wigton.

More cattle required for future sales please contact David Fearon on 07500 173273.

Overall Averages - Bullocks 280.48pkg Heifers 278.81pkg Bulls 268.92pkg

Bullocks	Sold	Average pkg	Max pkg.
651+kgs	3	280.48	297.50
Heifers	Sold	Average pkg	Max pkg.
501-590kgs	6	276.94	321.50
591+kgs	12	279.60	321.50
Bulls	Sold	Average pkg	Max pkg.
551-650kgs	1	270.50	270.50
651+kgs	1	267.50	267.50

Top 3 Bullocks

Pence per kg	Weight	Breed	Vendor
297.5	652	Limousin	D Hodgson, Croft Farm
277.5	742	British Blue	R Miller, Arkleby Hall
269.5	810	British Blue	R Miller, Arkleby Hall

Top 5 Heifers

Pence per kg	Weight	Breed	Vendor
321.5	703	Limousin	J J Crichton, Loughrigg
321.5	685	Limousin	J J Crichton, Loughrigg
321.5	586	Limousin	D A Harrison, Hill House
300.5	674	Limousin	D A Harrison, Hill House
290.5	632	Limousin	J J & J Benson & Sons, Kirkland Hall

PER KILO

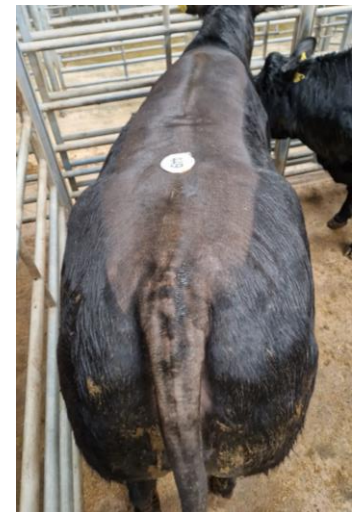
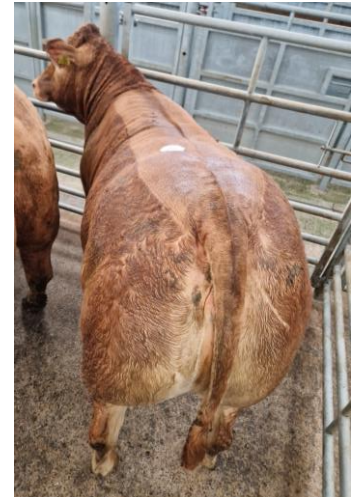
BULLOCKS – 3

Limousin 297.5 Croft Farm (Hodgson)

British Blue 277.5 269.5 Arkleby Hall (Miller)

HEIFERS – 18

Limousin 321.5 300.5 Hill House (Harrison) 321.5 (2) Loughrigg (Crichton) 290.5 Kirkland Hall (Benson) 284.5 New House (Watson) 277.5 267.5 Greenhill Farm (Little) 269.5 The Laurels (Steel) 267.5 The Thwaites (Dixon)



Both of J J Crichton, Loughrigg Limousin heifers realising 321.5ppk with the red Limousin also being the top grossing at £2260.15





Charolais 285.5 279.5 Kirkland Hall (Benson)

Angus 264.5 Lessonhall (Steel)

BULLS

Limousin 270.5 267.5 Mechi (Bowe)

PER HEAD

BULLOCKS – 3

British Blue £2182.95 £2059.05 Arkleby Hall (Miller)

Limousin £1939.70 Croft Farm (Hodgson)

HEIFERS – 18

Limousin £2260.15 £2202.28 Loughrigg (Crichton) £2025.37 £1883.99 Hill House (Harrison) £1904.60 The Thwaites (Dixon) £1900.46 New House (Watson) £1835.96 Kirkland Hall (Benson) £1692.46 The Laurels (Steel) £1645.23 £1468.22 £1438.71 Cockbridge House (Tinniswood) £1535.45 £1529.03 £1441.35 Greenhill Farm (Little)

Charolais £1929.98 £1718.93 Kirkland Hall (Benson)

Angus £1708.67 Lessonhall (Steel)

BULLS

Limousin £1893.90 £1723.09 Mechi (Bowe)

PRIME LAMBS – 1072

A useful show of commercial lambs met a useful trade albeit at lower levels than of late but fed sheep continue to attract significant interest to a top of £181 for a 55kg Beltex for Messrs Dent, Elm House. Plenty of lambs £100 over their weight. Feed into sheep and clean tails paying dividends.

Many more could have been sold please contact David Bowman on 07721 616786 or David Fearon on 07500 173273.

Overall Averages – Prime Lambs 261.75pkg

Prime Lambs	Sold	Average pkg	Max pkg.
32.1-39kgs	49	278.62	400.00
39.1-45.5kgs	682	268.99	407.10
45.6-52kgs	266	244.29	353.20
Over 52kg	35	254.52	329.10

Top Five Lambs Averages £:

£149.50 for 22 from R N Scott, West Micklethwaite
£145.27 for 24 from Messrs Dent, Elm House
£136.50 for 20 from The Laurels Farm
£131.29 for 14 from K Hodgson, Prospect House
£129.18 for 20 from G N Bowe & Sons, Bothel Parks

Top Five Lambs £:

£181 for 1 weighing 55kg from Messrs Dent, Elm House
£171 for 1 weighing 42kg from R N Scott, West Micklethwaite
£160 for 1 weighing 53kg from D A Harrison, Hill House
£159 for 2 weighing 48.5kg from R N Scott, West Micklethwaite
£159 for 1 weighing 44kg from R N Scott, West Micklethwaite

A Limousin heifer from D A Harrison, Hill House also reaching 321.5ppk



D & A Hunt, Croft House had a run of 11 Texel/Blue Texel Lambs





Top Five Lambs pkg:

407.1 for 1 weighing 42kg from R N Scott, West Micklethwaite
400.0 for 1 weighing 39kg from D A Harrison, Hill House
368.5 for 6 weighing 42.33kg from R N Scott, West Micklethwaite
362.8 for 2 weighing 43kg from Messrs Dent, Elm House
361.4 for 1 weighing 44kg from R N Scott, West Micklethwaite

PER HEAD

Beltex £181 £156 £155 £148 £146 £142.5 £133 Elm House (Dent) £171 £159 (2) £156 £148
£146 £142 £140 £139 West Micklethwaite (Scott) £160 £156 £145 £129.5 (2) Hill House
(Harrison) £139 £130 Thethwaite Farm (Bell) £137 £136 £132 Prospect House (Hodgson)
£135 Borrans Hill (Wybergh) £133 Heartsome Cottage (Fearon & Graham) £130 Holly Barn
(Peile)

Texel £153 £142 £141 £140 £135 £129.5 £125 £120 Bothel Parks (Bowe) £140 £120 Thistle
Bottom (Paterson) £140 Lane End (Jackson) £139 Fern Gulley (Jackson) £134 £129 £125
£120 (2) Allerby Hall (Miller) £131 £123 Westward Parks (Brockbank) £128 Aikhead Hall
Farm (Harrison) £123 Borranshill (Wybergh) £122 £120 Harrot Hill Farm (Stamper) £121 (2)
Croft House (Hunt) £119 Fairfield Farm (Fotheringham) £119 Belmont Farm (Bainbridge)
£119 Thethwaite Farm (Bell) £118.5 Mechi (Bowe)

Dutch Texel £142 £141 £138 (2) £136 £131 (2) The Laurels (Steel) £130.5 £130 £123 Mechi (Bowe)

Blue Texel £117 Croft House (Hunt)

Suffolk £106 £103.5 Hill House (Harrison) £105.50 Wiza Farm (Hird) £103 Noble Croft
(Connell) £98 The Thwaites (Dixon)

Mule £110 Newlands Farm (Gill)

Herdwick £98 Newtown Farm (Thompson)

PER KILO

Beltex 407.1 368.5 361.4 338.1 331.8 327.8 314.6 308.3 West Micklethwaite (Scott) 400.0
341.2 311.7 311.6 302.0 291.0 (2) Hill House (Harrison) 362.8 351.2 343.5 336.4 329.1 321.3
303.9 Elm House (Dent) 328.4 320.9 309.5 Thethwaite Farm (Bell) 314.0 297.7 291.7
Borranshill (Wybergh) 309.3 Heartsome Cottage (Fearon & Graham) 302.3 300.0 Holly Barn
(Peile) 292.5 291.5 Prospect House (Hodgson)

Texel 347.7 341.5 330.2 313.3 290.9 281.5 279.3 275.5 Bothel Parks (Bowe) 319.0 304.9
286.7 285.7 279.7 Allerby Hall (Miller) 300.0 Harrot Hill Farm (Stamper) 297.9 285.7 Thistle
Bottom (Paterson) 282.0 Hill House (Harrison) 280.0 The Thwaites (Dixon) 276.9 Hill Green Farm (Naylor)

Dutch Texel 342.1 315.4 303.5 Mechi (Bowe) 275.7 267.3 267.1 263.6 262.0 256.6 244.1 The Laurels Farm (Steel)

Blue Texel 272.1 Croft House (Hunt)

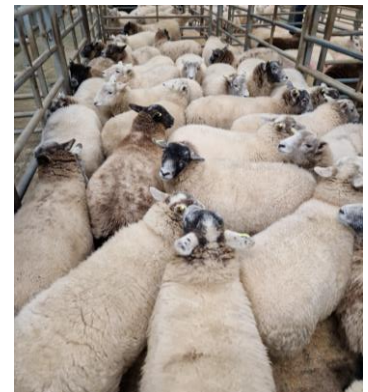
Suffolk 250.4 241.3 234.3 Hill House (Harrison) 236.1 The Thwaites (Dixon) 230.6 Wiza Farm (Hird)

Herdwick 235.7 Newtown Farm (Thompson)

Mule 217.8 Newlands Farm (Gill)



Messrs J J Dixon, The Thwaites had a run of 53 Texel Lambs



J W Thompson, Newtown Farm for a pen of 33 Herdwick Lambs





PRIME EWES – 140

More Ewes forward and a very similar trade to a top of £150 for a Texel Ewe from Messrs Bowe, Mechi. Swaledale ewes to a top of £42 from A Gill, Newlands Farm. Mules topping at £88 from MJ Lawson, Pasture House.

More Ewes required each week to meet increased orders, contact David Bowman on 07721 616786

Texel £150 £131 Mechi (Bowe) £135 £127 £125 Riggwood (Harrington) £130 Allerby Hall (Miller) £125 Borranshill (Wybergh) £124 Fern Gulley (Jackson) £123 Thethwaite Farm (Bell)

Millenium Bleu £140 Rosemount (Jackson)

Suffolk £131 £118 Pasture House (Lawson) £130 Borranshill (Wybergh) £119 Mechi (Bowe) £115 Noble Croft (Connell)

Beltex £125 Beech House (Peile) £119 £109 Holly Barn (Peile)

Badger Face £123 £120 Pasture House (Lawson)

Mule £88 Pasture House (Lawson) £86 Riggwood (Harrington) £82 Noble Croft (Connell)

Shetland £54 Pasture House (Lawson)

Swaledale £42 Newlands Farm (Gill)

TUPS

Texel £148 Pasture House (Dowling) £126 Croft End Farm (Fisher)

Beltex £120 Beech House (Peile)

