



## TUESDAY 20<sup>TH</sup> JUNE 2023

### PRIME CATTLE – 20

A market beating show of cattle today with possibly the best show seen for some time.

Top of the Pops today, a 670kg Limousin Heifer from J Dixon and Sons Ltd, Lesson Hall at 348.5pkg and grossing at £2334.95, purchased by B & T Kitson Butchers, Yarm, who also took the leading gross of £2422.80 (336.5pkg) for a 720kg Limousin from JJ Crichton, Loughrigg.

A greater number of Bullocks forward to a top of 303.5pkg (£2051.66) for Ian Cape, Kirkland Guards and purchased by Jamie Chapman, Wishaw.

More Cattle can easily be sold each week to advantage, please contact David Bowman on 07721 616786.

### PRIME BULLS – 4

A nice show of meat to a top of 235.5pkg for an Aberdeen Angus Bull from J & J Messenger, Adamgill

**Overall Averages - Bullocks 289.67pkg Heifers 304.03pkg Bulls 225.88pkg**

Bullocks	Sold	Average pkg	Max pkg.
551-650kgs	1	289.50	289.50
651+kgs	4	289.71	303.50

Heifers	Sold	Average pkg	Max pkg.
501-590kgs	2	271.31	293.50
591+kgs	9	310.53	348.50

Bulls	Sold	Average pkg	Max pkg.
370-550kgs	4	225.88	235.50

#### **Top 5 Bullocks**

Pence per kg	Weight	Breed	Vendor
303.5	676	Limousin	Messrs Cape. Kirkland Guards
295.5	725	Limousin	J Dixon & Sons Ltd, Lesson Hall
293.5	710	Limousin	A & C Park, Sea View
289.5	649	Limousin	JJ Crichton, Loughrigg
266.5	699	Limousin	Messrs Bowe, Mechi

#### **Top 5 Heifers**

Pence per kg	Weight	Breed	Vendor
348.5	670	Limousin	J Dixon & Sons Ltd, Lesson Hall
336.5	720	Limousin	JJ Crichton, Loughrigg
329.5	650	Limousin	DA Harrison & Co, Hill House
324.5	635	Limousin	Messrs Miller, Allerby Hall
311.5	605	Limousin	DA Harrison & Co, Hill House

#### **Top 4 Bulls**

Pence per kg	Weight	Breed	Vendor
235.5	481	Aberdeen Angus	J & J Messenger, Adamgill
233.5	535	Aberdeen Angus	J & J Messenger, Adamgill
225.5	475	Friesian	J & J Messenger, Adamgill
209.5	520	Swedish Red	J & J Messenger, Adamgill





## PER KILO

### **BULLOCKS – 5**

**Limousin** 303.5 Kirkland Guards (Cape) 295.5 Lesson Hall (Dixon) 293.5 Sea View (Park) 289.5 Loughrigg (Crichton) 266.5 Mechi (Bowe)

### **HEIFERS – 11**

**Limousin** 348.5 Lesson Hall (Dixon) 336.5 Loughrigg (Crichton) 329.5 311.5 294.5 Hill House (Harrison) 324.5 306.5 Allerby Hall (Miller) 293.5 272.5 Mechi (Bowe) 264.5 Lessonhall (Steel)

**Aberdeen Angus** 248.5 Lessonhall (Steel)

### **BULLS – 4**

**Aberdeen Angus** 235.5 233.5 Adamgill (Messenger)

**Friesian** 225.5 Adamgill (Messenger)

**Swedish Red** 209.5 Adamgill (Messenger)

## PER HEAD

### **BULLOCKS – 5**

**Limousin** £2142.38 Lesson Hall (Dixon) £2083.85 Sea View (Park) £2051.66 Kirkland Guards (Cape) £1878.86 Loughrigg (Crichton) £1862.84 Mechi (Bowe)

### **HEIFERS – 11**

**Limousin** £2422.80 Loughrigg (Crichton) £2334.95 Lesson Hall (Dixon) £2141.75 £1884.58 £1858.30 Hill House (Harrison) £2060.58 £1915.63 Allerby Hall (Miller) £1744.00 £1716.98 Mechi (Bowe) £1663.71 Lessonhall (Steel)

**Aberdeen Angus** £1413.97 Lessonhall (Steel)

### **BULLS – 4**

**Aberdeen Angus** £1249.23 £1132.76 Adamgill (Messenger)

**Swedish Red** £1089.40 Adamgill (Messenger)

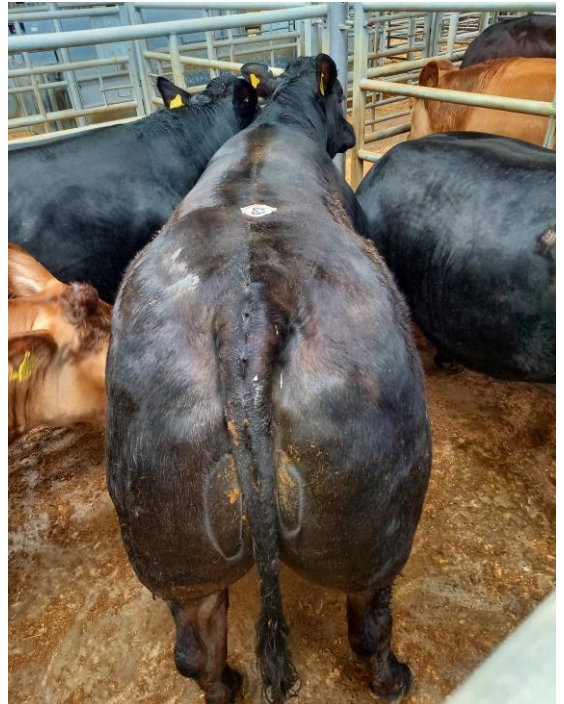
**Friesian** £1071.13 Adamgill (Messenger)

## PRIME SHEEP

### PRIME HOGGS – 75

A limited offering but good meat good to sell to a top of £128.50 for a pen of 17 Texel Hogs, weighing 52.76kg from Messrs JT & EM Marrs, Broomhills Farm.

Please advise David Bowman on 07721616786 or David Fearon on 07500173273 if you have more Hogs to sell.



Lot 828 – A Limousin Heifer, weighing 720kg selling to 336.5pkg and grossing at £2422.80 for JJ Crichton, Loughrigg





## Overall Averages – Prime Hogs 258.27pkg

Prime Hogs	Sold	Averages pkg	Max pkg.
39.1-45.5kgs	54	264.76	268.90
45.6-52kgs	21	244.55	249.00

### PER HEAD

**Texel** £128.5 £119.5 £110 Broomhills Farm (Marrs)

**Suffolk** £124.5 Broomhills Farm (Marrs)

### PER KILO

**Texel** 268.9 264.8 243.6 Broomhills Farm (Marrs)

**Suffolk** 249.0 Broomhills Farm (Marrs)

## SPRING LAMBS – 1009

A super entry of Lambs meeting a trade dearer than predicted for a mixed show of Lambs to level a 320.75pkg. Commercial 1<sup>st</sup> cross Lambs finding ready homes £125-£134 (40-43kg) with tup lambs good to sell as festival preparation takes place. The top end at similar returns on the week to a top of £195 for Norman Fisher, Dufton House with a 50kg Texel, which sold to Harrison's Butchers, King Street, Wigton.

Top pence per kilo went to Messrs A & MJ Trafford, Bassenthwaite Hall Farm at 452.4pkg for a 42kg Beltex, whose run of 12 lambs took the top average spot at £171.75.

More Lambs required each week, please advise of entries to David Bowman on 07721 616786 or David Fearon on 07500 173273.

## Overall Averages – Prime Lambs 320.75pkg

Prime Lambs	Sold	Average pkg	Max pkg.
32.1-39kgs	116	331.47	410.30
39.1-45.5kgs	708	321.11	452.40
45.6-52kgs	94	307.01	391.30
Over 52.1kgs	16	324.39	333.00

**Top Five Lambs Averages £:**

- £171.75 for 12 from A & MJ Trafford, Bassenthwaite Hall Farm
- £161.00 for 4 from Messrs S & D Peile, Parkgate Hall Farm
- £155.50 for 2 from K Hodgson, Prospect House
- £155.25 for 12 from Messrs N Fisher, Dufton House
- £151.75 for 12 from Messrs GN Bowe & Sons, Bothel Parks

**Top Five Lambs £:**

- £195 for 1 weighing 50kg from N Fisher, Dufton House
- £190 for 1 weighing 42kg from A & MJ Trafford, Bassenthwaite Hall Farm
- £180 for 1 weighing 46kg from N Fisher, Dufton House
- £179 for 1 weighing 42kg from P Rae, Greenah Hall
- £177 for 1 weighing 43kg from A & MJ Trafford, Bassenthwaite Hall Farm

**Top Five Lambs pkg:**

- 452.4pkg for 1 weighing 42kg from A & MJ Trafford, Bassenthwaite Hall Farm
- 426.2pkg for 1 weighing 42kg from P Rae, Greenah Hall
- 411.6pkg for 1 weighing 43kg from A & MJ Trafford, Bassenthwaite Hall Farm
- 410.3pkg for 1 weighing 39kg from RE Miller, West Farm





407.3pkg for 1 weighing 41kg from A & MJ Trafford, Bassenthwaite Hall Farm

## PER HEAD

**Texel** £195 £180 £163 £150 £147 £137 Dufton House (Fisher) £172 x 2 £170 £165 Bassenthwaite Hall Farm (Trafford) £166 £164 £153 £150 £148 £147 x 2 Bothel Parks (Bowe) £165 £159 Stoneraise (Armstrong) £158 £146.5 £139 £138.5 Staingills (Lyle) £157 £151 £145.5 £143 £140.5 £139 x 2 £136 Swallows Barn (Benson) £156 £154 £143 £138 x 2 £136 High Blaithwaite (Spark) £156 £145 Newlands Farm (Gill) £153 £150 £149 x 2 £137 Far Broom (Bell) £151 x 2 £147 £143 Borranshill (Wybergh) £150 £147 Hill House (Harrison) £149 West Park Farm (Brough) £144 £143 £142.5 £141 £140 Kirkland Guards (Cape) £142 Prospect House (Hodgson) £141 Woodend Farm (Hodgson) £141 Hudscales (Cowx) £141 Station House (Walker) £141 £140 High House (Norman) £140.5 £136 Wyndham House (Todd) £140 £138 Allerby Hall (Miller) £139 x 3 £135 Mechi (Bowe) £139 Bank House (Elliott) £138 £136 Whitehead Brow (Richardson) £136 x 5 Fairladies Farm (Clark) £135 x 2 Spring Hill (Hodgson) £135 Grange Farm (Hayton)



A run of 7 Texel Lambs from W Norman, High House sold to £141 (359.1pkg) and averaged £126.43

**Beltex** £190 £177 £169 £167 Bassenthwaite Hall Farm (Trafford) £179 £160 £158 x 2 £151 £144 £140 Greenah Hall (Rae) £168 £154 Parkgate Hall (Peile) £160 £155 £150 £148.5 £142 £139 West Farm (Miller) £148 £143 £140 £139.5 £138 £136 £135 £134 Moor Platt Farm (Butler) £147 £137 £135 £133 £132.5 £130.5 Thethwaite Farm (Bell) £144 £141 £139 x 2 £136 £135.5 £135 £134 £131 £130.5 £130 Staingills (Lyle) £143 Lowfield House (Robinson) £140 Midtown Farm (Bowe) £137 £134 Holme Croft (Sharp) £131 x 2 Sea View (Park)

**Suffolk** £169 Prospect House (Hodgson) £161 £139 Staingills (Lyle) £144 £140 £139.5 £124 West Park Farm (Brough) £140 £136.5 Hill House (Harrison) £140 £134 Manor Farm (Marrs) £140 Swallows Barn (Benson) £139 Drumburgh Castle Farm (Hodgson) £137 New House (Watson) £134.5 The Laurels Farm (Steel) £133 x 2 Lessonhall (Steel) £129.5 £125 Whitehead Brow (Richardson) £128 Woodend Farm (Hodgson) £125 x 2 Low Farm (Scott & Harryman)



A run of 30 Suffolk and Texel Lambs sold to £144 and £149 for CP & JA Brough, West Park Farm

**Dutch Texel** £160 £129.5 £129 x 2 Mechi (Bowe) £155 £142.5 £140 £129 The Laurels Farm (Steel)

**Charollais** £159 £152 x 2 £145 £141 £140 £139 X 2 £138 Kiln Close (Grainger) £139 New House (Watson) £137 Stoneraise (Armstrong)

**Blue Texel** £143 £132 Croft House (Hunt) £130 Spring Hill (Hodgson)

**Dutch Spotted** £140 £130 x 2 Croft House (Hunt)

**Roussin** £134 £128.5 Bank House (Elliott)

## PER KILO

**Beltex** 452.4 411.6 407.3 402.4 Bassenthwaite Hall Farm (Trafford) 426.2 372.1 359.1 355.3 351.2 Greenah Hall (Rae) 410.3 397.4 375.0 374.3 348.5 347.5 West Farm (Miller) 386.2 362.4 Parkgate Hall (Peile) 376.9 350.6 347.7 Thethwaite Farm (Bell) 368.4 Midtown Farm (Bowe) 362.6 358.5 347.5 Staingills (Lyle) 352.4 345.0 Moor Platt Farm (Butler) 348.8 Lowfield House (Robinson)

**Texel** 391.3 390.0 354.3 352.9 322.4 Dufton House (Fisher) 366.7 362.8 328.7 326.0 321.3 High Blaithwaite (Spark) 363.4





354.8 343.8 322.6 Far Broom (Bell) 357.1 349.6 345.8 341.7 340.0 330.0 330.0 Bothel Parks (Bowe) 351.2 347.1 331.2 326.7 Borranhill (Wybergh) 349.6 Woodend Farm (Hodgson) 348.1 339.2 338.3 332.5 Whitehead Brow (Richardson) 345.0 333.3 330.0 328.0 320.3 Allerby Hall (Miller) 341.5 320.5 320.0 High House (Norman) 334.9 330.9 Mechi (Bowe) 333.3 x 2 327.9 320.0 Kirkland Guards (Cape) 333.1 Hudscales (Cowx) 333.0 324.4 322.4 Staingills (Lyle) 333.0 320.9 Hill House (Harrison) 331.0 Bank House (Elliott) 330.0 324.5 Stoneraise (Armstrong) 327.5 326.8 323.9 West Park Farm (Brough) 325.6 Yew Tree Farm (Peile) 325.0 Newlands Farm (Gill) 323.1 Woodend Farm (Hodgson) 322.7 Prospect House (Hodgson) 322.5 321.6 Lowfield House (Robinson) 321.0 Spring Hill (Hodgson) 321.0 Swallows Barn (Benson) 320.8 320.4 Bassenthwaite Hall Farm (Trafford)

**Suffolk** 367.4 Prospect House (Hodgson) 326.2 New House (Watson) 320.7 306.4 304.9 304.3 West Park Farm (Brough) 320.5 308.6 Low Farm (Scott & Harryman) 320.5 317.9 Whitehead Brow (Richardson) 315.2 The Laurels Farm (Steel) 314.2 302.3 Lessonhall (Steel) 308.5 Hill House (Harrison) 304.4 Staingills (Lyle) 300.4 Swallows Barn (Benson) 300.0 Foulisye Farm (Bowe)

**Dutch Texel** 366.2 360.8 320.5 318.2 The Laurels Farm (Steel) 347.8 333.6 323.8 312.3 Mechi (Bowe)

**Charollais** 357.6 353.7 353.3 348.7 x 2 347.5 Kiln Close (Grainger) 334.9 New House (Watson) 324.4 Stoneraise (Armstrong)

**Blue Texel** 321.0 Spring Hill (Hodgson) 294.8 293.3 Croft House (Hunt)

**Roussin** 310.5 282.1 Bank House (Elliott)

**Dutch Spotted** 286.0 x 2 280.0 Croft House (Hunt)

## PRIME EWES – 68

Good meat ewes selling to a top of £173 for a Beltex from Messrs S & D Peile, Parkgate Hall Farm, whose run of 5 Beltex ewes averaged £145.40.

More ewes required each week please to meet buyers' requirements, contact David Fearon on 07500 173273

**Beltex** £173 £147 £130 Parkgate Hall (Peile)

**Texel** £171 £120 West Park Farm (Brough) £168 Winston Terrace (Stamper) £154 Winston Terrace (Clark) £142 £141 £139 £132 £127 £124 £115 Mechi (Bowe) £140 £139 £133 New House (Watson) £139 £133 x 2 Westward Parks (Brockbank) £129 Moor Platt Farm (Butler) £120 £116 Kiln Close (Grainger) £119 Holme Croft (Sharp)

**Dutch Texel** £150 £128 The Laurels Farm (Steel)

**Suffolk** £141 £124 Stoneraise (Armstrong) £130 Midtown Farm (Bowe) £125 Prospect House (Hodgson) £116 New House (Watson)

**Zwartble** £125 Oulton Grange (Carruthers) £118 Flaggstaff Farm (Holliday)

**Mule** £82 Broomhills Farm (Marrs) £80 Low Farm (Scott & Harryman)

**Clun** £66 Oulton Grange (Carruthers)



A run of 15 Texel Lambs sold to 333.3pkg (£144) and averaged £141.53 for Messrs Cape, Kirkland Guards



Dutch Spotted Lambs sold to 286.0pkg (£140) for L Hunt, Croft House





**HOPE'S**  
**AUCTIONEERS**

[www.hopesauction.co.uk](http://www.hopesauction.co.uk)

Livestock & General Auctions,  
Surveyors & Land Agents

T: 016973 42202

E: [auctioneers@hopesauction.co.uk](mailto:auctioneers@hopesauction.co.uk)

**Hope's Auction Co. Ltd.**

Syke Road, Wigton, Cumbria, CA7 9NS

**Swaledale** £64 Low Farm (Scott & Harryman)

**RAMS - 1**

**Texel** £110 Westward Parks (Brockbank)



Stay Connected   

Hope's Auction Company Limited - Registered in England: 052362.  
Registered address: Syke Road, Wigton, Cumbria, CA7 9NS. VAT Reg. No. 256 4393 42.