



## THURSDAY 2<sup>ND</sup> FEBRUARY 2023

### CALVES & STIRKS – 47

A smaller show forward today but a good mix of both Calves and Stirks and something to suit all buyers requirements, leaving some buyers going home empty handed.

Trade remaining strong, selling to vendors advantage, making the packed ringside of buyers pay for the quality presented.

Topping today at £610 a strong 9 month old British Blue Heifer Stirk from Messrs Hughes, Seaville Farm, whose run of four Blue Heifers averaged a very respectable £592.50.

Bull Stirks selling to £605 for a 7 month old British Blue from D & P Tiffin & Sons, Swinsty Farm.

Calves selling to a top of £380 for 3-month-old British Blue Bulls from Messrs K Brough & Son, Bolton Cottage Farm and Heifer Calves selling to £300 for a lovely Blue from J Bailey, Moorhouse Hall Farm.

Next Sale of Calves and Stirks will be held on Thursday 16th February 2023, contact the office on 016973 42202 or David Bowman on 07721616786 or David Fearon on 07500173273

Leading Averages:        Messrs Hughes, Seaville Farm – £592.50 for 4  
                                     D & P Tiffin & Sons, Swinsty Farm - £581.25 for 4  
                                     Messrs GN Hetherington, Crookdake House - £522.50 for 4

**British Blue Heifer Stirks** £610 £600 x 2 £560 Seaville Farm (Hughes) £450  
Crookdake House (Hetherington) £420 x 2 £410 x 3 Balladoyle Farm  
(Whitfield) £400 £390 East Farm (Carruthers)

**British Blue Bull Stirks** £605 £580 x 2 £560 Swinsty Farm (Tiffin) £540  
£410 £370 £330 Flatt Bank (Harrington) £400 £390 x 2 East Farm  
(Carruthers) £400 Balladoyle Farm (Whitfield)

**British Blue Steer Stirks** £570 x 2 £500 Crookdake House  
(Hetherington)

**British Blue Bull Calves** £380 £300 £290 Bolton Cottage Farm (Brough)  
£330 x 2 £320 x 3 £250 Plumbland Farm (Eilbeck) £330 Moorhouse  
Hall Farm (Bailey)

**British Blue Heifer Calves** £300 Moorhouse Hall (Bailey) £260 x 2  
Wheyrigg House (Evans) £260 Plumbland Farm (Eilbeck) £260 Flatt  
Bank (Harrington)

**Aberdeen Angus Bull Calves** £320 Moorhouse Farm (Watson)

**Aberdeen Angus Heifer Calves** £310 Moorhouse Farm (Watson)

**Charolais Bull Calves** £260 Wheyrigg House (Evans)

**Limousin Heifer Calves** £250 Plumbland Farm (Eilbeck) £230  
Wheyrigg House (Evans)



A run of British Blue Bull Stirks sold to £605 and averaged £581.25 from D & P Tiffin & Sons, Swinsty Farm



A cracking 7 week old British Blue Bull Calf sold to £330 for J Bailey, Moorhouse Hall Farm





## DAIRY CATTLE - 12

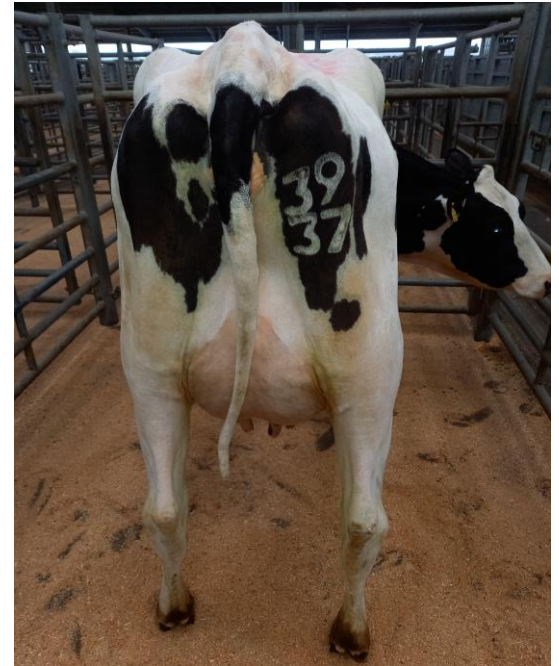
Cows (4) averaging - £1762.50.

Heifers (8) averaging - £1987.50.

A cracking show of Holstein and Jersey Cows and Heifers forward today, selling to a top of £2500 for a tremendous 6 week calved Holstein Heifer, giving 32ltrs with 3.3% protein and 4.0% Butter Fat from How End Farms.

Second Calvers selling to £2100 for a 40ltr Holstein Cow with 4.5% Butter Fat and 3.2% Protein again from How End Farms, whose run of 7 Cattle averaged a staggering £2121.43.

Five week calved half Norwegian Red Heifers giving 32ltr and 5.6% Butter Fat and 3.3% Protein sold to £2000 from How End Farms  
J & I Watson & Son, Moorhouse Farm had a super run of five Holsteins and Jersey Cows and Heifers averaging £1620.00 with second calved Jersey Cows selling to £1450 and Holstein Heifers selling to £1950  
More Dairy Cattle required to for fill buyers' requirements, next sale Thursday 16<sup>th</sup> February 2023 at 12 noon, contact David Bowman on 07721 616786



A Holstein Heifer, four weeks calved, giving 34ltrs 4.2% Butter Fat 3.6% Protein sold to £2350 from How End Farms

**Holstein Dairy Heifer** £2500 £2400 £2350 How End Farms (Swainson) £1950 £1850 Moorhouse Farm (Watson)

**Norwegian Red Heifer** £2000 How End Farms (Swainson)

**Jersey Heifer** £1450 £1400 Moorhouse Farm (Watson)

**Holstein Dairy Cow** £2100 £1800 £1700 How End Farms (Swainson)

**Jersey Dairy Cow** £1450 Moorhouse Farm (Watson)

## BREEDING SHEEP

In Lamb Ewes in demand today, selling to £280 a life for a pair from TC Whiteford, Tercrosset, whose run of ten lovely shaped Beltex Ewes averaged £278 per head.

First sale of the year for Ewes and Lambs, three and four shear, were selling to £106 per life for a Texel Ewe with Single Lamb from Messrs Ramsay, Dockray Hall

Fewer Store Lambs forward today, selling to £96 for a pen of 15 Beltex Lambs from JE & HL Jackson, Rosemount

More Ewes with Lambs at Foot required for the next sale, contact David Fearon on 07500 173273



Pairs of In Lamb Gimmer Shearlings sold to £280 on four occasions for Messrs TC Whiteford, Tercrosset

## IN LAMB GIMMER SHEARLINGS

**Beltex** £280 (2) x 4 £270 (2) Tercrosset (Whiteford)





# HOPE'S AUCTIONEERS

[www.hopesauction.co.uk](http://www.hopesauction.co.uk)

Livestock & General Auctions,  
Surveyors & Land Agents

T: 016973 42202

E: [auctioneers@hopesauction.co.uk](mailto:auctioneers@hopesauction.co.uk)

**Hope's Auction Co. Ltd.**

Syke Road, Wigton, Cumbria, CA7 9NS

## EWES WITH LAMBS AT FOOT

**Texel with Single Lamb** £106 £104 Dockray Hall (Ramsay)

**Charolais with Single Lamb** £105 Dockray Hall (Ramsay)

**Charolais with Twin Lambs** £70 Dockray Hall (Ramsay)

## STORE LAMBS

**Beltex** £96 Rosemount (Jackson) £90 Haltcliffe Bridge (Tweddell)

**Texel** £80 £70 Anthorn Farm (Irving) £74 £68 Whins Farm (Hunter)



A lovely six-week-old British Blue Heifer Calf sold to £300 from J Bailey, Moorhouse Hall Farm



Stay Connected   

Hope's Auction Company Limited - Registered in England: 052362.  
Registered address: Syke Road, Wigton, Cumbria, CA7 9NS. VAT Reg. No. 256 4393 42.