



## Tuesday 9th November 2021

### PRIME CATTLE – 14

Some great prime cattle forward today, a credit to our vendors, with prices remaining a consistent stable trade.

Heifers leading the way today at 277.5pkg with a strong, meaty 30-month-old Limousin Heifer, weighing 638kg from Messrs RE Miller, West Farm, grossing at £1770.45 and purchased by local butcher Paul Harrison for his King Street Shop, Wigton.

Steers topping at 247.5pkg (£1564.20) for a 17-month-old Limousin Steer, weighing 632kg from Messrs W Gray & Sons, East Mill.

Top gross today at £1816.33 (242.5pkg) a 25-month-old British Blue Heifer, weighing 749kg from Messrs J Dixon & Sons, Lesson Hall and again purchased by Paul Harrison for his Wigton Butchers Shop.

Local Butchers RJ Harrison & Sons (Paul) and RA & EJ Harrison & Sons (Tony) purchased 57% of the Prime Cattle available from today's sale for their butchers' shops in Wigton and Cockermouth.

All classes good to sell and more cattle required every week to match growing demand please Contact David Bowman on 07721 616786.

### BULLOCKS - 2

**Limousin** 247.5 230.5 East Mill (Gray)

### HEIFERS - 12

**Limousin** 277.5 West Farm (Miller) 274.5 272.5 266.5 Hundith House (Lawson) 263.5 253.5 Hill House (Harrison) 254.5 High Aketon (Miller) 251.5 244.5 Arkleby Hall (Miller)

**Blonde** 256.5 West Farm (Miller)

**British Blue** 242.5 235.5 Lesson Hall (Dixon)

### BULLS – 4

Bull trade was up on the previous sale +17pkg. Topping the pence per kilo section and the gross section at 263.5pkg (£1849.77) a Limousin bull weighing 702kg from Messrs DA Harrison & Company, Hill House.

British Shorthorn bulls to 204.5pkg (£1439.68) for Messrs Teasdale, Lowside, Troutbeck.

**Limousin** 263.5 238.5 Hill House (Harrison)

**British Shorthorn** 204.5 193.5 Lowside (Teasdale)



Lot 582 – Top Heifer at 277.5pkg, weighing 638kg from Messrs RE Miller, West Farm and purchased by Paul Harrison for his King Street Butchers Shop, Wigton





## PRIME LAMBS – 1218

Demand for prime lambs continues to amaze us with an absolute flyer today at Wigton. Overall average 295pkg (SQQ 301pkg) and £131.62 per head. Weighty and meaty lambs continue to command the highest premium with many heavy lambs £140 to £190. A lack of smart handy weight lambs about and more are required to meet demand. Many more lambs for all shapes and sizes could have been sold today. Sale topped at £192 for an outstanding 60kg Texel from Jenna Dixon, Lesson Hall, Wigton. Top price per kg went to a trio of 40kg Texels selling for 417.5ppkg from Messrs RR & G Bainbridge, Belmont Farm, Ivegill.

53 Pens & 125 lambs sold in excess of £160 per head!!

107 Pens & 349 lambs sold in excess of £140 per head!!

53 Pens sold in excess of 350pkg!!

90 Pens & 275 Lambs sold in excess of 320pkg!!

R.E Miller, West Farm sold a 50kg Black Texel to £190 and a 44kg Texel to £180

D Batty, Cobble Croft sold a 52kg Dutch Texel to £190 and a pair of 46.5kg to £177.

The Laurels, Dundraw sold some outstanding heavy Dutch Texel lambs to a top of £185 for 49kg. Averaging £163.69 for 26.

WR & JM Cowx & Son sold a 53kg Texel to £189 and a trio of 44kg Texels to £166.50

J Dixon & Sons, Lesson Hall sold a 51kg Beltex to £188 and 47kg Beltex to £182

G N Bowe & Sons, Bothel Parks sold a 46kg Texel to £180 and a 49kg Texel to £174.

R N Scott, West Micklethwaite sold a 51kg Beltex to £180 and a pen of 3 45kg to £164

T P Richardson sold a tremendous run of Texel and Beltex lambs to a top of £175 for a 45kg and a pen of 9 43.5kg to £167 to average £152.20 for 64.

M J Lawson, Pasture House sold a 50kg Texel to £171 and a pen of 48kg Suffolks to £142

Adam Bell, Thethwaite Farm sold a pen of 4 45kg Beltex to £169.50 and a 40kg Beltex to £166.50

Messrs J Dickinson, High House sold a pair of 44.5kg Texels to £167

L J Davidson, Halls Oven sold a 43kg Texel to £161.50.

Jack Lawson sold a penful of 47kg Mules to £126.50

G & A Watson, Paddigill sold 46kg Mules to £124.50 and 40kg Swaledales to £95

JB & EJ Peile, Greystoke Castle sold a penful of 25 46kg Mules to £123

Marsh House Farming sold a penful of 35 41kg Texel cross Mule lambs to £119.50





Top Five Lambs Averages £: £185.00 for 2 from Mrs Jenna Dixon, Lesson Hall  
£175.67 for 6 from Messrs D Batty, Cobble Croft  
£163.69 for 26 from Messrs Steel, The Laurels Farm  
£159.79 for 14 from Messrs J Dixon & Sons, Lesson Hall  
£159.26 for 23 from Messrs RE Miller, West Farm

Top Five Lambs £: £192 for a 60kg for Mrs. Jenna Dixon, Lesson Hall  
£190 for a 52kg for Messrs Batty, Cobble Croft  
£190 for a 50kg for Messrs RE Miller, West Farm  
£189 for a 53kg for Messrs WR & JM Cowx, Hudscales  
£188 for a 51kg for Messrs J Dixon, Lesson Hall

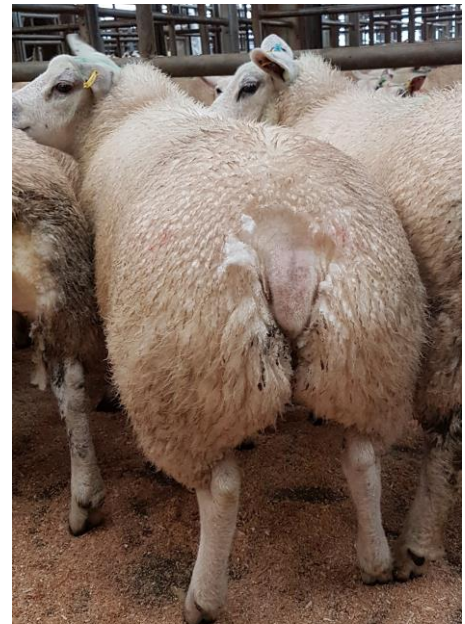
Top Five Lambs Pkg: 417.5 for a trio of 40kg for Messrs RR & G Bainbridge, Belmont Farm  
416.3 for a 40kg for Adam Bell, Thethwaite Farm  
409.1 for a 44kg for Messrs RE Miller, West Farm  
400.0 for a 40kg for Messrs Harrison, Hill House  
400.0 for a pair of 42kg for Messrs Harrison, Hill House

**Per Head**

**Beltex** £188 £182 £171 £166 £162.5 £137 Lesson Hall (Dixon) £180 £166 £164 £159 £147 £141  
£139 West Micklethwaite (Scott) £175 £167 x 2 £163 £157 £156 £146 £144.5 Heggale Lane  
(Richardson) £169.5 £166.5 £154.5 £148.5 £146.5 x 2 £137.5 £128.5 £128 Thethwaite Farm (Bell)  
£144 £128 £126 Parkgate Hall (Peile) £131.5 Low Farm (Harryman)

**Texel** £192 £178 Lesson Hall (Dixon) £190 £180 £169 £168  
£162.5 £161 £160 £157 £150 £148 £145 West Farm (Miller)  
£189 £169 £166.5 £164.5 Hudscales (Cowx) £180 £174 £164.5  
£159.5 £156.5 £150 £148.5 £146 £145.5 Bothel Parks (Bowe)  
£171 £164 £161.5 £156 £155 £153 Pasture House (Lawson)  
£168 £160 £145.5 Hill House (Harrison) £167 £154 High House  
(Dickinson) £167 £147 £143 Belmont Farm (Bainbridge) £161.5  
Halls Oven (Davidson) £160 £143 Heggale Lane (Richardson)  
£160 Greenah Villa (Rae) £158 Biglands House (Fosker) £156.5  
£151.5 £149.5 £144.5 Westward Parks (Brockbank) £155.5  
£153 £152.5 £143.5 Allerby Hall (Miller) £154.5 £140.5 High  
Laws House (Gilroy) £145 The Ash (Cowan) £144.5 Marsh  
House Farming (Wilson) £143 Clea Hall (Bland) £140 Hundith  
House (Lawson)

**Dutch Texel** £190 £177 £175 £160 Cobble Croft (Batty) £185  
£175 £173 £169 £166 £160 £156 £155 £149 The Laurels Farm  
(Steel)



A run of 6 Texel Lambs averaged £139.33 and sold to £154.50 for a 50kg Texel from Messrs Gilroy, High Laws House and sold to Paul Harrison for his Butchers Shop





**Rouge** £169.5 £154.5 Chapel Farm (Fell)

**Millenium** £166.5 £162.5 £148.5 Chapel Farm (Fell)

**Charollais** £144 £133 Greenah Villa (Rae) £140 Thistle Bottom (Paterson)

**Suffolk** £142 Pasture House (Lawson) £137.5 Thethwaite Farm (Bell) £136.5 £135 £132.5 Hill House (Harrison) £115.5 Manor Farm (Marrs)

**Mule** £132 £124.5 Paddigill (Watson) £126.5 Hundith House (Lawson) £123 x 3 £122.5 Greystoke Castle Farm (Peile) £118 Underbrow Farm (Airey) £113.5 Manor Farm (Marrs)

**Kerry Hill** £132 Greenah Villa (Rae)

**Hampshire** £116 Belmont Farm (Bainbridge)

**Swaledale** £95.5 £89 Paddigill (Watson)

**Black Face** £80 Underbrow Farm (Airey)

### Per Kilo

**Beltex** 416.3 376.7 336.4 332.3 325.6 323.4 297.9 295.7 284.4 Thethwaite Farm (Bell) 388.9 385.4 379.5 351.4 347.4 328.1 320.0 314.0 Heggale Lane (Richardson) 387.2 368.6 365.2 356.3 355.7 304.4 Lesson Hall (Dixon) 359.1 352.9 350.8 338.8 331.6 298.7 281.8 West Micklethwaite (Scott) 332.9 Low Farm (Harryman) 297.7 296.9 295.3 Parkgate Hall (Peile)

**Texel** 417.5 353.1 319.5 Belmont Farm (Bainbridge) 409.1 391.6 380.0 375.6 374.4 374.3 365.9 348.2 336.0 318.3 West Farm (Miller) 400.0 x 2 335.8 327.6 Hill House (Harrison) 391.3 389.0 369.7 364.0 356.1 355.1 335.8 333.7 Bothel Parks (Bowe) 381.3 370.2 367.9 332.9 330.1 322.3 Allerby Hall (Miller) 375.6 357.6 356.6 331.4 331.3 Hudscales (Cowx) 375.6 315.9 Halls Oven (Davidson) 375.3 325.4 314.1 High House (Dickinson) 351.1 342.0 334.6 315.4 311.9 Pasture House (Lawson) 336.0 Marsh House Farming (Wilson) 329.6 320.0 Lesson Hall (Dixon) 329.5 328.4 326.8 318.9 Westward Parks (Brockbank) 326.5 310.4 Norman Farm (Watson) 320.0 Greenah Villa (Rae) 312.2 High Laws House (Gilroy) 310.3 Greystoke Castle Farm (Peile)

**Dutch Texel** 380.6 376.3 365.4 313.7 Cobble Croft (Batty) 377.6 356.0 338.0 324.1 319.2 308.0 294.5 288.9 280.7 The Laurels Farm (Steel)



Messrs Watson, Paddigill sold 11 Mule Lambs to £132 and 7 Swaledale Lambs to £95.50



Marsh House Farming sold a run of 169 Texel Lambs to an average of £117.53 with a pen of four 43kg lambs to £144.50





**Rouge** 368.5 348.5 Chapel Farm (Fell)

**Millenium** 370.0 361.1 325.2 Chapel Farm (Fell)

**Charollais** 289.1 276.9 Greenah Villa (Rae) 281.9 Thistle Bottom (Paterson)

**Suffolk** 300.0 281.4 273.9 Hill House (Harrison) 291.3 Pasture House (Lawson) 286.5 Thethwaite Farm (Bell) 267.5 Manor Farm (Marrs)

**Mule** 270.7 261.5 244.4 211.0 Paddigill (Watson) 265.5 Hundith House (Lawson) 263.3 262.9 260.0 258.9 Greystoke Castle Farm (Peile) 258.0 Manor Farm (Marrs) 256.5 211.1 Underbrow Farm (Airey) 250.7 The Faulds (Greenbank)

**Kerry Hill** 244.4 Greenah Villa (Rae)

**Hampshire** 276.2 Belmont Farm (Bainbridge)

**Swaledale** 235.8 229.4 Paddigill (Watson)

**Black Face** 210.5 Underbrow Farm (Airey)

### **PRIME EWES – 82**

Fewer Ewes forward today and average trade back slightly on the week, however, top gross up on the week and topping at £139 for a trio of Texel Ewes from Messrs RB & RAG Irving, Anthorn Farm. Tups topped at £160 for a Texel Tup from Messrs Bland, Clea Hall. A big strong Swaledale tup to £104 for Messrs Watson, Paddigill  
More Ewes required each week to fill demand please contact David Bowman on 07721 616786

**Texel** £139 Anthorn Farm (Irving) £134 Cobble Croft (Batty) £126 £114 Pasture House (Lawson) £115 Greystoke Castle Farm (Peile) £100 Riggwood (Harrington)

**Mule** £88 Greystoke Castle Farm (Peile) £85 Hill House (Harrison)

**Blackface** £64 Underbrow Farm (Airey)

**Swaledale** £49 Manor Farm (Marrs) £49 Greystoke Castle Farm (Peile)

**Herdwick** £45 Pasture House (Lawson) £44 Manor Farm (Marrs)

### **RAMS – 3**

**Texel** £160 Clea Hall (Bland)

**Beltex** £129 Bothel Parks (Bowe)

**Swaledale** £104 Paddigill (Watson)

