



Tuesday 30th November 2021

PRIME CATTLE – 15

Smart, meated cattle forward today but trade slightly easier on the week.

Yet again Heifers leading the way and topping at 245.5p/kg for a 26-month-old British Blue, weighing 626kg from Ian Grainger, Kiln Close, grossing to £1536.83 and purchased by local Butcher Paul Harrison for his King Street Shop, Wigton.

Top pence per kilo Steer at 232.5p/kg, a 22-month-old Charolais, weighing 674kg and grossing at £1567.05 from Messrs Bell, Hallbankgate Farms, purchased by RJ Harrison & Sons Ltd.

Top gross today at £1568.63 (222.5p/kg) was another 23-month-old British Blue Heifer weighing 705kg again from Ian Grainger, Kiln Close.

Bullocks averaged 222.25p/kg.

Heifers averaged 235.67p/kg.

All classes good to sell and more cattle required every week to match growing demand please Contact David Bowman on 07721 616786.

BULLOCKS - 4

Charolais 232.5 219.5 Hallbankgate Farms (Bell)

Limousin 229.5 The Thwaites (Dixon)

Luig 204.5 Hallbankgate Farms (Bell)

HEIFERS - 11

British Blue 245.5 222.5 Kiln Close (Grainger)

Limousin 242.5 The Hill Farm (Hurst) 241.5 238.5 Lowside (Teasdale) 241.5 237.5 Mechi (Bowe) 238.5 228.5 The Thwaites (Dixon)

Parthenaise 232.5 Bowscale (Wilson)

Charolais 221.5 Hallbankgate Farms (Bell)

PRIME LAMBS – 846

Numbers scarce today and well short of buyer requirements

creating a bidding frenzy to average a whopping 310p/kg and £140 per head. Handy weight lambs saw the sharpest rise with an SQQ average of 322p/kg! The sale topped at £173 for a wonderful pair of 45.5kg Beltex from Messrs W L Musgrave & Sons, Cardew Hall and 410.3p/kg for an outstanding 39kg Beltex from Messrs A & MJ Trafford, Bassenthwaite Hall.

G N Bowe & Sons, Bothel Parks sold a pair of 45kg Texels to £170



Lot 582 – Top pence per kilo at 245.5, a British Blue Heifer from Ian Grainger, Kiln Close, weighing 626kg and selling to Paul Harrison for his King Street Butchers Shop, Wigton.





R.E Miller, West Farm sold a fantastic run of 36 lambs to average £152 (344ppkg). Topping at £168 for a 45kg Texel.

Pat Rae, Greenah Hall sold an outstanding 47kg Beltex to £168

M J Lawson, Pasture House sold a great run of well finished lambs to a top of £167 for a pen of 3 44kg Texels.

William Gate, Low Aketon sold a 50kg Beltex to £166

Messrs Fell, Chapel Farm sold a 46kg Rouge to £164 and a pen of 4 42kg Rouges to £160

Messrs Miller, Allerby Hall sold a tremendous run of well bred Texel and Beltex lambs to a top of £164 for 46kg Texels. Averaging £146.71 (342p) for 65.

A & B Fisher, Lairdlaugh sold a smart pen of 4 41kg Texels to £158

J M Wharton & Son, Snade a run of 21 Beltex lambs to average £154 (368pkg).

Chloe Hunter, Cape Farm sold a penful of solid 50kg Suffolks to £150 and a penful of 48kg Mules to £136.50

Messrs Walker & Son, Beechcroft sold a pen of meaty 51kg Mules to £142 and a pen of 20 48kg Mules to £139.50.

Messrs JB & EJ Peile, Greystoke Castle sold a run of 75 Mule lambs to average £136.50 for 48.5kg (281pkg)

T N & F Cowan & Son, The Ash sold a pen of 24 43kg Texel cross mule lambs to £131.50

Top Five Lambs Averages £: £164.83 for 6 from Messrs A & MJ Trafford, Bassenthwaite Hall Farm
£164.25 for 4 from Miss P Rae, Greenah Hall
£156.42 for 12 from Messrs WW Gate, Low Aketon
£156.25 for 16 from Messrs Fell, Chapel Farm
£155.70 for 10 from Messrs Steel, The Laurels Farm

Top Five Lambs £: £173 for a 45.5kg for Messrs WL Musgrave, Cardew Hall Farm
£171 for a 43kg for Messrs A & MJ Trafford, Bassenthwaite Hall Farm
£170 for a 45kg for Messrs GN Bowe & Sons, Bothel Parks
£170 for a 42kg for Messrs A & MJ Trafford, Bassenthwaite Hall Farm
£169 for a 45.5kg for Messrs WL Musgrave, Cardew Hall Farm

Top Five Lambs Pkg: 410.3 for a 39kg for Messrs A & MJ Trafford, Bassenthwaite Hall Farm
409.8 for a 41kg for Messrs A & MJ Trafford, Bassenthwaite Hall Farm
407.9 for a 38kg for Messrs JM Wharton & Son, Snade
404.8 for a 42kg for Messrs A & MJ Trafford, Bassenthwaite Hall Farm
397.7 for a 43kg for Messrs A & MJ Trafford, Bassenthwaite Hall Farm





Per Head

Beltex £173 £169 £167 £163 £159 £156 £151 £150 £147 £146 x 4
£142 Cardew Hall Farm (Musgrave) £171 £170 £168 £164 £160
£156 Bassenthwaite Hall Farm (Trafford) £168 £166 £164 £159
Greenah Hall (Rae) £167 £161 £159 £158 £155 £149 £145 £142
Snade (Wharton) £166 £157 £156 £153 Low Aketon (Gate) £160
£140 Parkgate Hall (Peile) £158 x 2 £157 £156 £149 £144 x 2
£141 Lairdlaugh (Fisher)

Texel £170 £162 £160 £156 £152 £150 x 2 £146 £145 Bothel
Parks (Bowe) £168 £164 x 2 £163 £158 £157 £155 £149 x 2 £148
£147 x 2 £146 £143 West Farm (Miller) £167 £165 £158 £155
£149 £148 £147 £146 £144 £143.5 Pasture House (Lawson) £164
£160 x 3 £158.5 £157.5 £156 £154 £147.5 £146 x 2 £144 Allerby
Hall (Miller) £159 £150 The Ash (Cowan) £154 £144.5 £140.5
Mechi (Bowe) £150.5 £143.5 Anthorn Farm (Irving) £148.5 £146.5
£144.5 £143.5 Arkleby House (Wilkinson) £146.5 £143 The
Thwaites (Dixon) £143 High Laws House (Gilroy) £142 Chalkside
Farm (Coulthard)

Dutch Texel £160 x 2 £158 £150 £145 The Laurels Farm (Steel)

Suffolk £167 Cardew Hall Farm (Musgrave) £159 Mechi (Bowe)
£154 £150 Cape Farm (Hunter) £154 Bothel Parks (Bowe) £151
Allerby Hall (Miller) £138.5 x 2 £135.5 Pasture House (Lawson)
£129.5 Greenah Villa (Rae)

Rouge £164 £160 Chapel Farm (Fell)

Millenium £155 x 2 £154 x 2 Chapel Farm (Fell)

Charollais £144.5 Thistle Bottom (Paterson) £133.5 Greenah Villa (Rae)

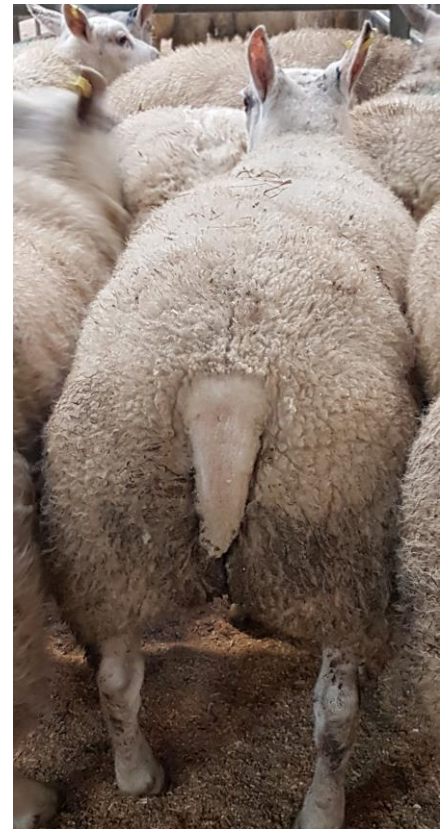
Cheviot £144.5 Thistle Bottom (Paterson)

Mule £142 £139.5 Beechcroft (Walker) £137.5 £136.5 £135.5 Greystoke Castle Farm (Peile) £136.5
Cape Farm (Hunter) £126.5 Fellside House Farm (Pears) £105.5 Manor Farm (Marrs) £104 Paddigill
(Watson)

Swaledale £85 Paddigill (Watson)

Per Kilo

Beltex 410.3 409.8 404.8 397.7 390.5 362.8 Bassenthwaite Hall Farm (Trafford) 407.9 383.3 374.8
374.1 367.1 364.1 363.0 333.8 Snade (Wharton) 385.4 372.3 369.2 363.4 343.9 329.2 306.4
Lairdlaugh (Fisher) 380.2 371.4 349.5 346.7 344.4 340.8 325.9 317.8 315.1 314.7 312.1 311.0 x 2
303.0 Cardew Hall Farm (Musgrave) 372.7 368.9 357.4 305.8 Greenah Hall (Rae) 366.4 347.3 341.5



Messrs JM Wharton & Son,
Snade sold 21 Beltex Lambs to a
top of £167 and averaged
£154.38 per head





Parkgate Hall (Peile) 332.0 331.9 330.5 316.6 Low Aketon (Gate)

Texel 387.4 379.1 376.0 373.3 372.7 358.3 349.6
341.9 329.2 319.6 x 2 319.3 310.9 310.4 West Farm (Miller) 385.5
377.8 362.8 333.3 326.6 324.0 317.4 306.1 Bothel Parks (Bowe)
385.5 377.4 372.1 371.4 369.7 367.8 356.5 350.4 350.0 347.6 343.0
339.6 324.3 308.0 307.9 Allerby Hall (Miller) 376.7 375.0 363.2 347.0
334.3 329.1 313.0 311.4 Pasture House (Lawson) 348.8 345.7 317.4
The Ash (Cowan) 340.1 332.7 Anthorn Farm (Irving) 320.8 309.5
Mechi (Bowe) 317.8 316.7 The Thwaites (Dixon) 310.9 307.7 High
Laws House (Gilroy) 310.5 Bothel Craggs (Thirlwall) 310.2 Greenah
Villa (Rae) 308.7 Chalkside Farm (Coulthard) 307.8 Arkleby House
(Wilkinson)

Dutch Texel 345.4 333.3 329.5 307.7 The Laurels Farm (Steel)

Suffolk 363.0 Cardew Hall Farm (Musgrave) 317.2 317.0 289.2
Pasture House (Lawson) 302.0 Bothel Parks (Bowe) 296.6 290.6
Cape Farm (Hunter) 296.1 Allerby Hall (Miller) 286.2 Greenah Villa
(Rae) 283.9 Mechi (Bowe) 278.2 Manor Farm (Marrs)

Rouge 378.7 356.5 Chapel Farm (Fell)

Millenium 348.4 338.5 322.9 303.9 Chapel Farm (Fell)

Charollais 296.4 Thistle Bottom (Paterson) 284.0 Greenah
Villa (Rae)

Cheviot 291.9 Thistle Bottom (Paterson)

Mule 290.0 275.2 Beechcroft (Walker) 283.6 Cape Farm
(Hunter) 283.2 Fellside House Farm (Pears) 281.8 278.6
275.2 Greystoke Castle Farm (Peile) 267.6 Manor Farm
(Marrs) 260.0 250.0 Paddigill (Watson)

Swaledale 215.2 Paddigill (Watson)

PRIME EWES – 13

Fewer Ewes forward today due to the time of year, more could have been sold to vendors' advantage.

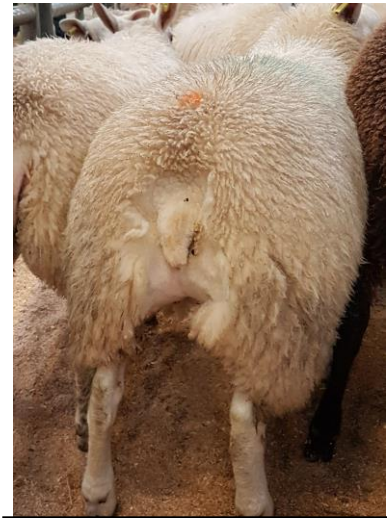
Topping today at £145 a strong Suffolk for Kieran Moore, Rose Lea.

Texel Ewes to £124 for Messrs Irving, Anthorn Farm, Leicester Ewes to £133 for Messrs Pears, Fellside House Farm and Mules to £81 for Messrs Harrington, Riggwood.

Tups to £138 for a Texel from Messrs Hayton, Grange Farm.

More Ewes required each week to fill demand please contact David Bowman on 07721 616786

Suffolk £145 Rose Lea (Moore)



Messrs Dixon, The Thwaites sold 33 Texel Lambs to an average of £129.89 per head or 298.92pkg average



Messrs GN Bowe & Sons, Bothel Parks sold a lovely run of 19 Texel Lambs to an average of £153 per head and to a top of £170





HOPE'S
AUCTIONEERS

www.hopesauction.co.uk

Livestock & General Auctions,
Surveyors & Land Agents

T: 016973 42202

E: auctioneers@hopesauction.co.uk

Hope's Auction Co. Ltd.

Syke Road, Wigton, Cumbria, CA7 9NS

Leicester £133 £114 Fellside House Farm (Pears)

Texel £124 £80 Anthorn Farm (Irving) £86 £78 Riggwood (Harrington)

Mule £81 Riggwood (Harrington)

RAMS – 3

Texel £138 Grange Farm (Hayton)

Leicester £132 Grange Farm (Hayton)

Beltex £105 Fellside House Farm (Pears)



Stay Connected   

Hope's Auction Company Limited - Registered in England: 052362.
Registered address: Syke Road, Wigton, Cumbria, CA7 9NS. VAT Reg. No. 256 4393 42.