



## Tuesday 16th November 2021

### PRIME CATTLE – 31

A great show of cattle today, something to meet all purchasers needs, with prices remaining consistent on this week

Again, Heifers leading the way to a top of 271.5pkg (£1476.96) for a real classy, meaty 19-month-old Limousin, weighing 544kg from Messrs JG & M Little, Greenhill Farm, which sold to RJ Harrison & Sons Ltd for his King Street Butchers Shop, Wigton.

Jointly topping the Bullocks today at 256.5pkg, firstly for an 18-month-old Blonde Bullock, weighing 709kg from Messrs Bowe, Mechi Farm and secondly for a 30-month-old Parthenaise Bullock, weighing 638kg from Messrs JS Wilson & Son, Bowscale.

Top gross price paid at £1818.59 (256.5pkg) went to Messrs Bowe, Mechi Farm for their Blonde Steer.

Top gross price paid for the Heifers at £1778.63 (229.5pkg) went to Messrs J Dixon & Sons Ltd, Lesson Hall for a 26-month-old British Blue

All classes good to sell and more cattle required every week to match growing demand please Contact David Bowman on 07721 616786.

### BULLOCKS - 7

**Limousin** 245.5 Kirkland Guards (Cape) 239.5 212.5 The Thwaites (Dixon) 208.5 Cockbridge House (Tinniswood)

**Blonde** 256.5 Mechi Farm (Bowe)

**Parthenaise** 256.5 246.5 Bowscale (Wilson)

### HEIFERS - 23

**Limousin** 271.5 Greenhill Farm (Little) 266.5 259.5 Elm House (Dent) 256.5 236.5 Mechi Farm (Bowe) 247.5 232.5 East Mill (Gray) 222.5 202.5 200.5 Cockbridge Bridge (Tinniswood) 218.5 Kiln Close (Grainger)

**British Blue** 246.5 Ellenbank (Byers) 239.5 201.5 Kiln Close (Grainger) 238.5 229.5 Lesson Hall (Dixon)

**Simmental** 249.5 Greenhill Farm (Little)

**Blonde** 243.5 The Thwaites (Dixon)

**Charolais** 232.5 Ellenbank (Byers) 215.5 Greenhill Farm (Little)



Lot 345 – Top price of the day at 271.5pkg from Messrs JG & M Little, Greenhill Farm, which sold to RJ Harrison & Sons Ltd for the King Street Butchers Shop, Wigton





## BULLS – 5

No continental Bulls forward today but prices for Dairy bred Bulls to a top of 185.5p/kg for a 14-month-old Fleckvieh Bull from Messrs Taylor, Crofton Hall Farm

**Fleckvieh** 185.5 177.5 166.5 Crofton Hall Farm (Taylor)

**Holstein** 119.5 x 2 Crofton Hall Farm (Taylor)

## PRIME LAMBS – 950

Numbers tighter and trade every bit as good as last week with all classes of lambs competitively bid for and in strong demand. Mule lambs with weight sold exceptionally well today proving Wigton can sell all classes of lambs on a weekly basis.

The sale topped at £186 for an outstanding 49kg Beltex from Messrs GEH & SJ Stoddart, Hillside, Wigton and 411.5p/kg for a smart 39kg Beltex from S M Watson, Croft House, Caldbeck.

33 Pens sold in excess of £150 per head!!

63 Pens & 184 lambs sold in excess of £140 per head!!

Messrs Miller, Allerby Hall sold a smart 43kg Beltex to £169 and a pair of 41kg Texels to £135.50

B W Findlay, Easter Balgillo sold a tremendous run of Beltex lambs to a top of £167 twice firstly for a 46kg and secondly for a pair of 48.5kg. Averaging £145.30

R Hall & Son, Inglewood Edge sold some exceptional quality Beltex to a top of £164.50 for 46kg and a pen of 6 39.5kg to £138.50. Averaging £131.69 (324.8p).

W Gate, Low Aketon sold a 46kg Beltex to £164 and a pen of 4 44kg to £148.50

J N Harrison & Sons, Downhall sold 43kg Texel to £164

The Laurels Farm, Dundraw sold a pen of 5 46kg Dutch Texels to £164

A & B Fisher, Lairdlaugh sold an outstanding run of Beltex and Suffolk lambs to a top of £163 for a pen of 7 45kg Beltex and a pair of 52kg Suffolks to £150 to average £151.33

S M Watson sold a 39kg Beltex to £160.50 and a pair of 38kg Beltex to £143.50

RL & AR Phillips, Fir Trees Farm sold a 41kg Beltex to £159, a pen of 4 43kg Beltex to £158, a pen of 12 44kg Suffolks to £128.50 and a penful of 27 44kg Mules to £120.50.

M & L Peile, Holly Barn sold a smart 43kg Beltex to £157 and a pen of 4 41kg to £136.

R N Scott, West Micklethwaite sold a 49kg Beltex to £154 and a pen of 4 39kg to £135.50

B Strong, Grapes Barn sold a 44kg Beltex to £153

Messrs Paterson, Thistlebottom sold 3 50kg Charolais lambs to £150 and 48kg Cheviots to £148.





G J Butler, Moor Platt sold a 53kg Beltex to £150

KJ & CS Wilson Ltd, Wood Farm sold a pen of 3 46kg Texels to £147 and a pair of smart 41.5kg Texels to £145.

N Fisher, Dufton House sold 50kg Suffolk lambs to £141.50

A Fotheringham, Fairfield Farm sold a 47kg Texel to £140 and a penful of 32 43kg Texel cross mule lambs to £122.50.

R & S Nixon & Co, Oakwood Farm sold a trio of 42kg Beltex to £139 and a pen of 16 38kg Beltex to £127.50

Chloe Hunter, Cape Farm sold a penful of 16 47kg Mules to £126.50

Messrs Pears, Fellside House Farm sold a meaty pen of 14 46kg Mules to £124.50

J Harrington, Riggwood sold a penful of 42kg Texel cross mules lambs to £121.50

Top Five Lambs Averages £: £163.20 for 5 from Messrs GEH & SJ Stoddart, Hillside  
£151.33 for 30 from Messrs A & B Fisher, Lairdlaugh  
£149.52 for 23 from Messrs Steel, The Laurels Farm  
£148.29 for 12 from Messrs WW Gate, Low Aketon  
£145.30 for 48 from Messrs BW Findlay, Easter Balgillo

Top Five Lambs £: £186 for a 49kg for Messrs GEH & SJ Stoddart, Hillside  
£169 for a 43kg for Messrs Miller, Allerby Hall  
£167 for a 48.5kg for Messrs BW Findlay, Easter Balgillo  
£167 for a 46kg for Messrs BW Findlay, Easter Balgillo  
£164.5 for a 46kg for Messrs R Hall & Son, Inglewood Edge

Top Five Lambs Pkg: 411.5 for a 39kg for SM Watson, Croft House  
393.0 for a 43kg for Messrs Miller, Allerby Hall  
387.8 for a 41kg for Messrs RL & AR Phillips, Fir Trees Farm  
381.4 for a 43kg for Messrs JN Harrison & Sons, Downhall  
379.6 for a 49kg for Messrs GEH & SJ Stoddart, Hillside

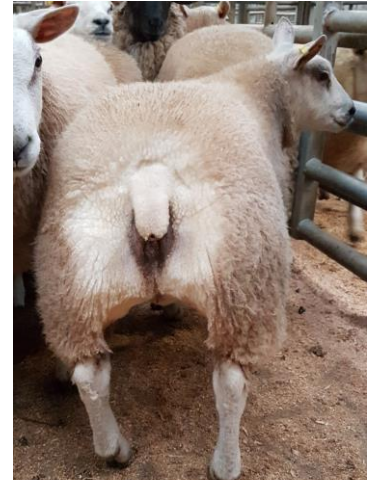
### Per Head

**Beltex** £186 £158 £157 Hillside (Stoddart) £167 x 2 £163 x 2 £149.5 £149 x 2 £143.5 £136 £135.5 x 2  
Easter Balgillo (Findlay) £164.5 £148 £138.5 £138 £136 £133 Inglewood Edge (Hall) £164 £148.5  
£147.5 £143.5 Low Aketon (Gate) £163 £158 £147 £146 £145 Lairdlaugh (Fisher) £160.5 £143.5  
£140 Croft House (Watson) £159 £158 £157 £155 £154 £150 £143 £137 £136 Fir Trees Farm  
(Phillips) £157 £139 £136 £133 Holly Barn (Peile) £154 £139.5 £135.5 West Micklethwaite (Scott)  
£153 Grapes Barn (Strong) £150 £146 £140 £131.5 Moor Platt Farm (Butler) £139 £135 Oakwood  
Farm (Nixon) £136.5 £135.5 £130.5 Sea View (Park) £135.5 Beech House (Peile) £130 Thethwaite  
Farm (Bell)





**Texel** £169 £148 £135.5 x 2 £135 £131 £129 x 3 £127.5 £124.5  
 £122.5 £122 Allerby Hall (Miller) £164 £139.5 £129.5 Downhall  
 (Harrison) £153 Newton Field (Beaty) £147 £145 £135 £130 £125 Wood  
 Farm (Wilson) £146 £140.5 £129.5 £128.5 £127.5 The Thwaites (Dixon)  
 £146 £129.5 Thethwaite Farm (Bell) £146 Low Aketon (Gate) £144  
 £137.5 £122.5 Acacia House (Harrison) £140 £126.5 £124.5 £122.5 x 2  
 Fairfield Farm (Fotheringham) £140 £130 x 2 Prior Hall (Hall) £139  
 Thistle Bottom (Paterson) £138.5 £135 £123 Borranshill (Wybergh) £138  
 Oakwood Farm (Nixon) £136.5 Grapes Barn (Strong) £135.5 £124.5  
 £123.5 Riggwood (Harrington) £134.5 £133.5 Dufton House (Fisher)  
 £134 £125.5 £125 Mechi (Bowe) £131 £130 £124 Fir Tree Farm  
 (Phillips) £125.5 £124.5 £123 Kirkland Guards (Cape) £125.5 £123.5  
 Greystoke Castle Farm (Peile) £124.5 Sea View (Park)



Messrs Fisher, Dufton House sold a lovely run of 20 lambs to an average of £123.30 and a top of £141.5 for a Suffolk Lamb

**Dutch Texel** £164 £162 £156 £152 £139 x 2 The Laurels Farm (Steel)

**Rouge** £135.5 £120 Inglewood Edge (Hall) £128.5 Croft House (Watson)

**Charollais** £150 £143 Thistle Bottom (Paterson)

**Suffolk** £150 x 2 £141 Lairdlaugh (Fisher) £141.5 Dufton House (Fisher) £139 £132 Cape Farm (Hunter) £138.5 Sea View (Park) £134 £128.5 Fir Trees Farm (Phillips) £134 Prior Hall (Hall) £126.5 Thethwaite Farm (Bell) £121 Oakwood Farm (Nixon) £120.5 Fairfield Farm (Fotheringham) c

**Cheviot** £148 Thistle Bottom (Paterson)

**Leicester** £130 Fellside House Farm (Pears)

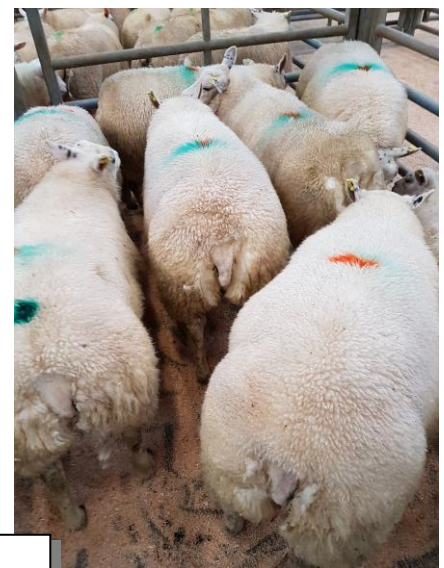
**Mule** £126.5 Cape Farm (Hunter) £124.5 Fellside House Farm (Pears) £123.5 Greystoke Castle Farm (Peile) £120.5 Fir Trees Farm (Phillips)

**Hampshire** £106.5 Belmont Farm (Bainbridge)

**Herdwick** £98.5 Newtown Farm (Thompson)

### Per Kilo

**Beltex** 411.5 377.6 325.6 Croft House (Watson) 387.8 367.9 362.9  
 361.1 350.0 340.5 335.8 329.8 326.2 Fir Trees Farm (Phillips) 379.6  
 365.1 347.3 Hillside (Stoddart) 365.1 339.0 325.7 302.3 Holly Barn  
 (Peile) 363.0 344.3 337.2 332.7 321.7 304.1 Easter Balgillo  
 (Findlay) 358.8 309.8 Lairdlaugh (Fisher) 357.6 350.6 345.0 342.1  
 328.9 324.4 313.3 309.6 Inglewood Edge (Hall) 356.5 333.7 325.4  
 305.3 Low Aketon (Gate) 347.7 304.7 Grapes Barn (Strong) 347.4  
 314.3 309.6 303.3 303.1 West Micklethwaite (Scott) 338.8 Sea View  
 (Park) 333.3 321.4 Oakwood Farm (Nixon) 307.7 Moor Platt Farm



Messrs Nixon, Oakwood Farm sold 33 Lambs to an average of £128.67





(Butler) 307.3 Haltcliffe Bridge (Tweddell) 306.6 Thethwaite Farm (Bell) 301.1 Beech House (Peile)

**Texel** 393.0 326.5 321.7 314.6 301.1 300.0 296.9 293.5 293.2 292.1 291.1 290.4 289.6 288.3 283.6 283.0 Allerby Hall (Miller) 381.4 319.4 310.0 306.6 299.8 284.5 Downhall (Harrison) 363.2 Oakwood Farm (Nixon) 349.4 325.3 317.1 315.0 290.7 Wood Farm (Wilson) 308.0 289.5 283.3 283.2 Riggwood (Harrington) 307.7 293.3 285.7 280.0 Belmont Farm (Bainbridge) 307.5 292.7 291.6 284.2 Borranshill (Wybergh) 306.1 306.0 295.9 294.9 Kirkland Guards (Cape) 304.7 286.7 Fir Trees Farm (Phillips) 300.0 298.9 284.5 Dufton House (Fisher) 300.0 297.9 284.0 283.0 Fairfield Farm (Fotheringham) 298.0 283.3 Thethwaite Farm (Bell) 292.0 Low Aketon (Gate) 289.4 Acacia House (Harrison) 288.9 Prior Hall (Hall) 288.0 284.9 284.8 280.8 The Thwaites (Dixon) 286.6 Thistle Bottom (Paterson) 285.2 285.1 Mechi (Bowe) 283.0 281.9 Sea View (Park) 280.5 Greyrigg House (Todhunter)

**Dutch Texel** 376.7 367.1 355.0 301.0 288.4 275.2 The Laurels Farm (Steel)

**Rouge** 331.9 303.0 Inglewood Edge (Hall) 306.0 Croft House (Watson)

**Charollais** 298.0 282.7 Thistle Bottom (Paterson)

**Suffolk** 301.1 290.9 Fir Trees Farm (Phillips) 286.0 x 2 282.0 Lairdlaugh (Fisher) 285.1 Prior Hall (Hall) 283.0 Dufton House (Fisher) 282.7 Sea View (Park) 281.4 Oakwood Farm (Nixon) 280.9 280.8 Cape Farm (Hunter) 279.1 Thethwaite Farm (Bell) 267.8 Fairfield Farm (Fotheringham)

**Cheviot** 292.1 Thistle Bottom (Paterson)

**Leicester** 206.3 Fellside House Farm (Pears)

**Mule** 272.3 Fir Trees Farm (Pears) 270.2 Fellside House Farm (Pears) 268.5 Greystoke Castle Farm (Peile) 265.3 Cape Farm (Hunter)

**Hampshire** 253.6 Belmont Farm (Bainbridge)

**Herdwick** 264.8 Newtown Farm (Thompson)

## PRIME EWES – 12

Only a handful of Ewes forward today but trade up on the previous week (+20.59pkg).

Topping today at £141 a strong Texel Ewe for Messrs Hall, Prior Hall.

Mules to £95 from the same home.

More Ewes required each week to fill demand please contact David Bowman on 07721 616786

**Texel** £141 £140 £139 Prior Hall (Hall) £116 Cunningarth (Watson)

**Mule** £95 Prior Hall (Hall) £91 Fairfield Farm (Fotheringham) £88 Fellside House Farm (Pears)



Unloading 41 Lambs from Greystoke Castle Farm for Messrs Peile, which later went on to sell at an average of £123.68

