



Tuesday 26th October 2021

PRIME CATTLE – 25

Prices still increasing with trade being up on the previous week (+4.75pkg). Steers topping on three occasions at 269.5pkg, firstly for a 19-month-old Limousin, weighing 694kg for Messrs JJ Crichton, Loughrigg, secondly for an 18-month-old Limousin, weighing 574kg for Messrs W Miller, High Aketon and thirdly for a Limousin, weighing 659kg, grossing at £1776.01 for Messrs JS Wilson & Son, Bowscale. Top gross Steer was £1870.33 for Messrs JJ Crichton, Loughrigg with the above Limousin.

Heifers topping at 289.5pkg for a 19-month-old British Blue, weighing 546kg and grossing at £1580.67 for Messrs W Miller, High Aketon. Top gross Heifer at £1781.04 (271.5pkg) was a British Shorthorn weighing 656kg for Messrs Crichton, Loughrigg which was purchased by Tony Harrison for his Main Street Butchers Shop, Cockermouth.

Local Butcher Paul Harrison purchased 25% of today's Prime Cattle for his King Street Butchers Shop, Wigton.

All classes good to sell and more cattle required every week to match growing demand please Contact David Bowman on 07721 616786.

BULLOCKS - 4

Limousin 269.5 High Aketon (Miller) 269.5 Loughrigg (Crichton) 269.5 Bowscale (Wilson)

Parthenais 263.5 Bowscale (Wilson)

HEIFERS - 20

Limousin 287.5 279.5 265.5 High Aketon (Miller) 284.5 Greenhill Farm (Little) 281.5 276.5 269.5 263.5 Hill House (Harrison) 279.5 Loughrigg (Crichton) 271.5 262.5 The Thwaites (Dixon) 254.5 Croft Farm (Hodgson)

British Blue 289.5 High Aketon (Miller) 224.5 223.5 Kiln Close (Grainger)

Parthenais 282.5 Bowscale (Wilson)

British Shorthorn 271.5 Loughrigg (Crichton)

Charolais 256.5 High Aketon (Miller) 254.5 Greenhill Farm (Little)

Blonde 252.5 High Aketon (Miller)

BULLS – 1

Limousin 209.5 Kiln Close (Grainger)





PRIME LAMBS – 1158

Demand strengthens again on the week with a sale average of 269ppkg (+4p) and a plainer show than the previous. Smart lambs a similar trade and commercial types noticeably sharper. The sale topped at £164.50 and 361.5ppkg for a wonderful pair of shapely 45.5kg Beltex from R.N Scott, West Micklethwaite, Wigton.

60 Pens & 160 Lambs sold in excess of £130 per head!!

56 Pens & 183 Lambs sold in excess of 300pkg!!

Messrs G N Bowe, Bothel Parks sold a 44kg Texel to £157 and a pen of 3 46kg Texels to £140

Messrs R Hall & Son, Inglewood Edge sold some fantastic Beltex lambs to a top of £155 for a pen of 3 48kg. Averaging £137.28 (325.24ppkg) for 30.

Messrs Fell, Chapel Farm sold a smart 43kg Rouge to £147 and a pen of 5 45.5kg Rouge to £140

Mrs W Storey, Limestone Cottage sold a smart 43kg Beltex to £146

Messrs Miller, Allerby Hall sold an outstanding run of well finished lambs to a top of £145 on two occasions firstly for a 42kg Texel and again for a 43kg Blue De Maine. Averaging £119 for 169.

Messrs R.E Miller, West Farm sold a pair of 47kg Beltex to £145 with another pair at 45kg making £144.50 averaging £133.91 for 35.

Messrs R & S Nixon & Co, Oakwood sold a 48kg Beltex to £144

Messrs D & A Hunt, Croft House sold a 43kg Texel to £143 and a 45kg Texel to £140

Messrs J.E Brockbank & Sons, Westward Parks sold a 53kg Texel to £140 and a penful of 44kg Texels to £130 with their run of 104 averaging £119.50

Adam Bell, Thethwaite Farm sold a pen of 9 43kg Beltex to £139 and a pen of 5 44kg Beltex to £138.

Wellington Farm sold a pair of 42.5kg Texels to £138.50

Ethan Miller, High Aketon sold a 43kg Texel to £138.

D A Harrison & Co, Hill House sold a pair of 47kg Texels to £136, a pair of smart 41kg Beltex to £129 and a pen of 15 46kg Suffolk lambs to £117.50

M J Lawson, Pasture House sold 49kg Beltex Tup lambs to £134 and a pen of 42kg to £132

Messrs Pears, Fellside House Farm sold a penful of 48kg Mules to £113.50

Fairfield Farm sold a pen of 43kg Suffolks to £112.50

Messrs DG & LA Bland sold a penful of 41kg Herdwick X Texels to £102.50 and another penful of 21 40kg to £100.50

Messrs G & A Watson, Paddigill sold 43kg Swale lambs to £92.50





Top Five Lambs Averages £: £148.00 for 3 from Messrs GEH & SJ Stoddart, Hillside
£137.28 for 29 from Messrs R Hall & Son, Inglewood Edge
£136.00 for 23 from Messrs Fell, Chapel Farm
£133.91 for 33 from Messrs RE Miller, West Farm
£130.67 for 3 from Ethan Miller, High Aketon

Top Six Lambs £: £164.5 for a pair of 45.5kg for Messrs RN Scott, West Micklethwaite
£157 for a 44kg for Messrs GN Bowe & Sons, Bothel Parks
£155 for a trio of 48.67kg for Messrs R Hall & Son, Inglewood Edge
£154 for a pair of 48.5kg for Messrs R Hall & Son, Inglewood Edge
£148 for a trio of 41kg for Messrs GEH & SJ Stoddart, Hillside
£148 for a 43kg for Messrs S & D Peile, Parkgate Hall

Top Five Lambs Pkg: 361.5 for a pair of 45.5kg for Messrs RN Scott, West Micklethwaite
361.0 for a trio of 41kg for Messrs GEH & SJ Stoddart, Hillside
356.8 for a 44kg for Messrs GN Bowe & Sons, Bothel Parks
347.6 for a 42kg for Messrs R Hall & Son, Inglewood Edge
345.2 for a 42kg for Messrs Miller, Allerby Hall

Per Head

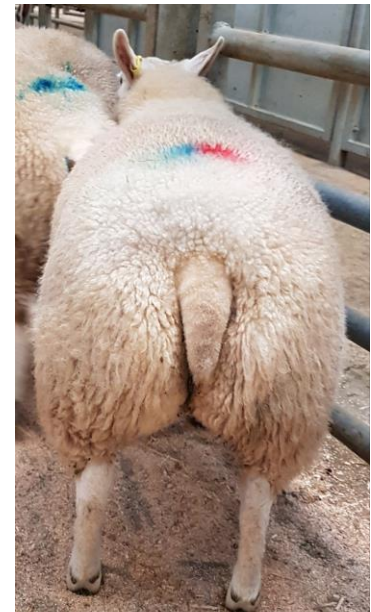
Beltex £164.5 £145 £136.5 £133 £132 £128 £127 £126 West Micklethwaite (Scott) £155 £154 £146 £139 £138 £131 £125 Inglewood Edge (Hall) £148 Parkgate Hall (Peile) £148 Hillside (Stoddart) £146 £125 Limestone Cottage (Storey) £145 £144.5 £144 £140 x 3 £133 £128 West Farm (Miller) £144 £138.5 £126.5 Oakwood Farm (Nixon) £139 £138 £137 £132 £126 Thethwaite Farm (Bell) £134 £132 £125 Pasture House (Lawson)

Texel £157 £140 £137 £130 £126 £125 Bothel Parks (Bowe) £145 £144 £138 x 4 £136 £135.5 £131 £129 £127.5 £127 £126 Allerby Hall (Miller) £143.5 £133 £127 West Farm (Miller) £143 £140 x 2 Croft House (Hunt) £140 £130 £127 £126 Westward Parks (Brockbank) £138.5 Wellington Farm (Harrington) £138 High Aketon (Miller) £136 £132 £130 £129 Hill House (Harrison) £127 Belmont Farm (Bainbridge) £127 £126.5 Mechi (Bowe) £126 Fairfield Farm (Fotheringham) £125 Lords Close (Hewetson)

Rouge £147 £140 £137 £119 Chapel Farm (Fell) £118 Inglewood Edge (Hall)

Blue De Maine £145 Allerby Hall (Miller) £119 Chapel Farm (Fell)

Millenium £136 £126 £120 Chapel Farm (Fell)



A run of 16 Beltex Lambs from Messrs Storey, Limestone Cottage averaged £119.81 and his top lamb grossed at £146





Blue Texel £130 £124 High Aketon (Miller)

Dutch Texel £129 Mechi (Bowe)

Charollais £126 Thistle Bottom (Paterson) £115.5 Allerby Hall (Miller)

Suffolk £120 Allerby Hall (Miller) £117.5 £117 Hill House (Harrison) £112.5 x 2 Fairfield Farm (Fotheringham)

Dutch Spotted £110.5 x 2 Croft House (Hunt)

Leicester £89 Fellside House Farm (Pears)

Mule £113.5 Fellside House Farm (Pears) £110.5 Fairfield Farm (Fotheringham) £102.5 Paddigill (Watson) £102 Newlands Farm (Gill)

Herdwick £108 £103 £102.5 £100.5 Clea Hall (Bland) £92.5 £87 Grange View (Monkhouse)

Ryeland £97 Low Blaitwaite (Bell)

Swaledale £93 £92.5 £86 Paddigill (Watson)

Per Kilo

Beltex 361.5 328.1 308.5 297.6 295.7 293.4 289.0 280.5 West Micklethwaite (Scott) 361.0 Hillside (Stoddart) 347.6 333.6 331.6 330.5 325.3 318.5 317.5 312.5 Inglewood Edge (Hall) 344.2 Parkgate Hall (Peile) 339.5 303.8 297.6 296.4 289.1 285.7 Limestone Cottage (Storey) 334.1 320.8 312.2 310.3 306.0 Thethwaite Farm (Bell) 323.6 321.1 308.5 307.7 x 2 300.0 294.7 283.0 West Farm (Miller) 309.9 Pasture House (Lawson) 309.5 300.0 295.0 285.0 Oakwood Farm (Nixon) 282.4 Parkgate Hall (Peile)

Texel 356.8 325.0 318.6 304.3 295.1 286.4 284.3 281.4 Bothel Parks (Bowe) 345.2 336.6 x 2 330.8 327.5 327.3 322.6 320.9 306.8 299.4 299.0 297.7 296.8 293.2 290.9 x 2 289.4 280.3 Allerby Hall (Miller) 332.6 311.1 297.9 Croft House (Hunt) 325.9 282.0 Wellington Farm (Harrington) 320.9 High Aketon (Miller) 317.5 297.5 Belmont Farm (Bainbridge) 311.4 294.0 291.6 290.3 Westward Parks (Brockbank) 310.8 289.4 Hill House (Harrison) 300.0 Newlands Farm (Graham) 292.9 West Farm (Miller) 289.5 Police Houses (Hudson)

Rouge 341.9 309.6 307.7 264.4 Chapel Farm (Fell) 287.8 Inglewood Edge (Hall)

Blue De Maine 337.2 Allerby Hall (Miller)

Millenium 317.8 300.0 286.4 Chapel Farm (Fell)

Blue Texel 260.0 258.3 High Aketon (Miller)

Dutch Texel 303.0 285.0 Mechi (Bowe)

Charollais 262.5 Allerby Hall (Miller) 239.2 Thistle Bottom (Paterson)





Suffolk 259.2 253.6 230.3 Hill House (Harrison) 257.1 239.4 Fairfield Farm (Fotheringham) 254.7 Red Gable (Bowe) 252.8 Hunters Place (Hunter) 250.0 Allerby Hall (Miller)

Dutch Spotted 246.0 x 2 Croft House (Hunt)

Leicester 211.9 Fellside House Farm (Pears)

Mule 237.2 Newlands Farm (Gill) 233.2 Fellside House Farm (Pears) 230.3 Paddigill (Watson) 225.5 Fairfield Farm (Fotheringham)

Herdwick 249.8 247.0 241.8 234.8 Clea Hall (Bland) 233.6 223.3 Grange View (Monkhouse)

Ryeland 227.7 Low Blaithwaite (Bell)

Swaledale 215.1 208.1 197.9 Paddigill (Watson)

PRIME EWES – 65

Topping on two occasions at £129, firstly for a pair of Texel Ewes from Messrs G Spark, High Blaithwaite and secondly for a single Beltex Ewe from Messrs S & D Peile, Parkgate Hall. Texel Tups to £121 for Messrs Storey, Limestone Cottage. More Ewes required each week to fill demand please contact David Bowman on 07721 616786

Beltex £129 £111 Parkgate Hall (Peile)

Texel £129 £122 x 2 High Blaithwaite (Spark) £117 Grange View (Monkhouse) £110 £109 Low Blaithwaite (Bell) £105 Ling Beck Park (Thomas) £105 Norman Farm (Watson)

Kerry Hill £83 Round Hill Farm (Harrison)

Swaledale £68 Paddigill (Watson) £57 Pasture House (Lawson)

RAMS – 4

Texel £121 Limestone Cottage (Storey) £101 Grange View (Monkhouse)

Leicester £108 Fellside House Farm (Pears)



19 Texel and Herdwick Lambs from Mark Monkhouse, Grange View, Caldbeck



Its that time of year again where Belly Clipping season starts – Jacob Stoddart clipping sheep for Mr Rod Scott, West Micklethwaite

