



Tuesday 20th July 2021

PRIME CATTLE – 11

A good show of quality and trade firm to a top of 266.5pkg for a smart black Limousin Heifer from W Miller, High Aketon weighing 549kg.

Top gross Heifer £1584 for a 606kg Blonde from JJ Crichton, Loughrigg.

Bullocks selling well to £1642 (248.5pkg) for a Charolais from I Grainger, Kiln Close weighing 661kg.

More cattle required every week to match growing demand please Contact David Bowman on 07721 616786.

BULLOCKS – 4

Limousin 233.5 Kiln Close (Grainger) 225.5 214.5 East Mill (Gray)

Charolais 248.5 Kiln Close (Grainger)

HEIFERS - 6

Limousin 266.5 259.5 x 2 255.5 High Aketon (Miller)

Piedmontese 263.5 Loughrigg (Crichton)

Blonde 261.5 Loughrigg (Crichton)

BULLS - 1

Just one British Blue Bull in today, weighing 675kg to 200.5pkg and grossing at £1353.38 from I Grainger, Kiln Close.

British Blue 200.5 Kiln Close (Grainger)

PRIME LAMBS – 919

As expected, trade easing as the procurement for Qurbani festival comes to an end yet a very strong average of 262pkg was achieved for a plainer show of lambs on the week. Still remaining a fantastic trade for mid-July with the best end lambs still very good to sell with many of this type reaching 300pkg and more.

Sale topped at £144 per head for a well-shaped 45kg Charolais cross from I Grainger, Kiln Close, Glasson and 325.6pkg for a smart 41kg Dutch Texel from D. Batty, Cobble Croft, Blennerhasset.

67 Pens & 220 Lambs sold in excess of £120 per head

31 Pens & 102 Lambs sold in excess of 300pkg

J E Brockbank & Sons sold a tremendous run of weighty Texel lambs with a pen of 5 44kg selling to £137 and a pen of 14 43.5kg to £132.





J Watson, New House sold a pair of 45kg Texels to £136.50 and a pen of 3 42kg Texels to £127.50

D Jones, The Croft sold 48kg Beltex to £136 and a pen of 3 40kg to £125.50

D. Batty, Cobble Croft sold a pair of 46kg Dutch Texels to £134 and 41kg to £133.50

Messrs Dent, Elm House sold a pen of 4 44kg Beltex to £133 and a smart 42kg Beltex to £132

G N Bowe & Sons, Bothel Parks sold a pen of 3 44kg Texels to £132.50

Messrs Miller, Allerby Hall sold a great run of meaty lambs to a top of £132 for a pen of 3 43kg Texels and a pen of 10 43kg to £121.50

WR & JM Cowx & Son, Hudscapes sold smart Texel lambs to a top of £129.50 for pen of 8 45.8kg and a pen of 9 43kg to £126.50

Messrs R Hall & Son, Inglewood Edge sold a tremendous run of 49 lambs with a pen of 5 41kg Beltex to £129.50 and a pen of 15 40kg Rouge lambs to £118.

K Hodgson, Prospect House sold a pen of 3 43kg Beltex to £126.50

S & D Peile, Parkgate Hall sold a very smart pair of 38kg Beltex to £121

TB & J Parker, Pringle House sold smart pen of 3 41kg Texels to £121

Messrs W Miller, High Aketon sold smart handy weight Beltex with a pen of 5 38kg reaching £117

J Lawson, Hundith House sold a smart pen of 37kg Texels to £115

JS Hayton, Grange Farm sold 42kg Mule lambs to £98.50, a ringful of 35 37kg Texel cross mules to £92.

All classes of lambs required each week, contact Rory Livesey 07827966377

Top Five Lambs Averages £: £127.85 for 10 from GN Bowe & Sons, Bothel Parks
£126.78 for 18 from Messrs Dent, Elm House
£124.38 for 16 from D Batty, Cobble Croft
£123.89 for 14 from D Jones, The Croft
£123.87 for 27 from Messrs WR & JM Cowx & Son, Hudscapes

Top Five Lambs £: £144 for a 45kg from I Grainger, Kiln Close
£141 for a 47kg from R Watson, New House
£137 for five 44.2kg from JE Brockbank & Sons, Westward Parks
£136.5 for a pair of 45.5kg from J Watson, New House
£136 for a 48kg from D Jones, The Croft



A run of 27 lambs from
Messrs WR & JM Cowx & Son, Hudscapes
Averaged £123.87 per head





Top Five Lambs Pkg: 325.6 for a 41kg from D Batty, Cobble Croft
324.4 for a 41kg from D Batty, Cobble Croft
320.0 for a 45kg from I Grainger, Kiln Close
318.4 for a pair of 38kg from S & D Peile, Parkgate Hall
317.1 for a pair of 41kg from Messrs Miller, Alllerby Hall

Per Head

Beltex £136 £125.5 £125 £124.5 £123 £117.5 The Croft (Jones) £133 £132 £128 £126.5 £124 £118
Elm House (Dent) £130 £125 £119 Greenah Hall (Rae) £129.5 £125.5 £125 £122.5 Inglewood Edge
(Hall) £128 £115 East Mill (Gray) £128 Haltcliffe Bridge (Tweddell) £125 £121 £115 Parkgate Hall
(Peile) £118 £117 High Aketon (Miller)

Texel £141 £136.5 £127.5 New House (Watson) £137
£133 £132 £124 £123 Westward Parks (Brockbank)
£132.5 £128 £127.5 £126 £122 Bothel Parks (Bowe)
£132 £130 £129.5 £126 £123 £121.5 Allerby Hall (Miller)
£132 £127 Seaville Cote (Brown) £129.5 £126.5
Hudscales (Cowx) £128 £124 £123 High Blaithwaite
(Spark) £126.5 £125.5 £124 Prospect House (Hodgson)
£126 Wellington Farm (Harrington) £125 Broomhills Farm
(Marrs) £124.5 Chalkside Farming (Coulthard) £123
Green Farm (Mattinson) £123 Clea Mire (Holliday) £121.5
£120 Borranshill (Wybergh) £121 High Hall (Thompson)
£121 Pringle House (Parker) £120 x 2 Mechi (Bowe)
£120 Low House (Dickinson)

Dutch Texel £134 £133.5 £133 £128.5 Cobble Croft
(Batty)

Rouge £118 Inglewood Edge (Hall)

Suffolk £118 Greenah Hall (Rae) £110 Greenah Villa (Rae) £107 Beech Tree Farm (Bell) £107
Allerby Hall (Miller)

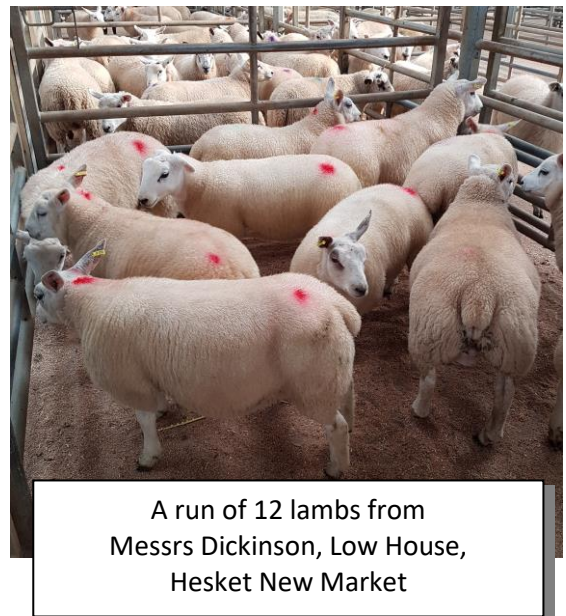
Charollais £144 £123 Kiln Close (Grainger)

Dutch Spotted £110 Croft House (Hunt) £102 Waverton House (Hortin)

Cheviot £86 Clea Hall (Bland)

Mule £98.5 Grange Farm (Hayton)

Herdwick £86.5 Clea Hall (Bland)





Per Kilo

Beltex 318.4 292.4 Parkgate Hall (Peile) 316.5
314.3 298.1 292.1 Inglewood Edge (Hall) 314.3 x 2
312.2 305.1 300.6 275.6 Elm House (Dent) 311.2
308.6 306.1 300.0 283.3 282.0 The Croft (Jones)
306.3 288.0 281.0 276.7 High Aketon (Miller) 304.8
East Mill (Gray) 284.4 Haltcliffe Bridge (Tweddell)
276.6 Greenah Hall (Rae)

Texel 317.1 304.6 293.0 291.0 290.1 283.3 281.3
Allerby Hall (Miller) 312.9 310.0 303.0 300.0
Westward Parks (Brockbank) 308.1 287.3 Hundith
House (Lawson) 301.1 293.1 280.5 278.3 Bothel
Parks (Bowe) 300.0 x 3 New House (Watson) 300.0
Clea Mire (Holliday) 295.1 291.4 275.4 Pringle
House (Parker) 295.0 High Hall (Thompson) 293.4
282.3 277.9 Hudscapes (Cowx) 292.0 280.9
Seaville Cote (Brown) 291.9 288.4 285.2 Prospect
House (Hodgson) 288.9 Low House (Dickinson)
288.9 285.4 284.4 Kirkland Guards (Cape) 288.7
276.4 High Blaithwaite (Spark) 285.4 Kirkhouse
(Dean) 284.2 277.9 Borranshill (Wybergh) 281.1
Green Farm (Mattinson) 278.0 Wellington Farm
(Harrington) 276.7 Chalkside Farming (Coulthard)
275.6 Fellside House Farm (Pears)

Dutch Texel 325.6 324.4 301.1 297.8 Cobble Croft
(Batty)

Rouge 284.6 Inglewood Edge (Hall)

Suffolk 251.4 250.1 240.8 Beech Tree Farm (Bell) 246.0 Allerby Hall (Miller) 240.8 Greenah Hall
(Rae)

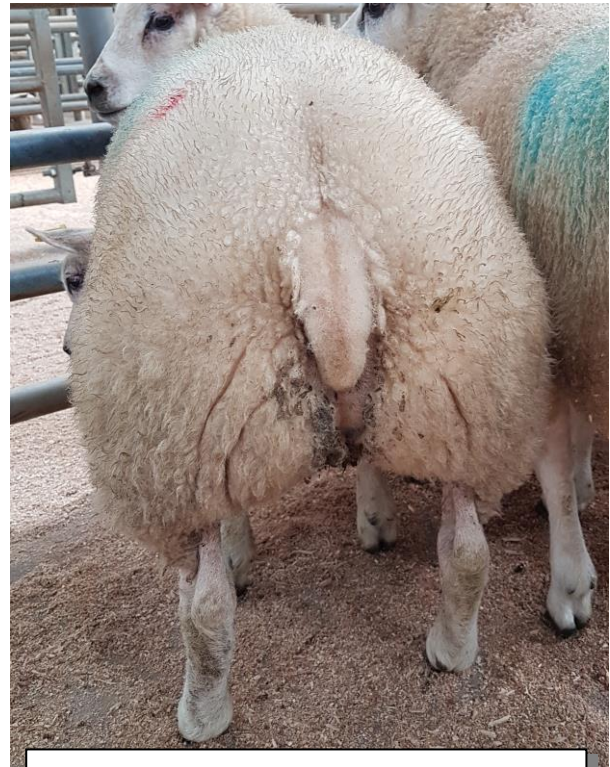
Charollais 320.0 300.0 Kiln Close (Grainger)

Dutch Spotted 248.8 Waverton House (Hortin) 220.0 Croft House (Hunt)

Cheviot 230.9 Clea Hall (Bland)

Mule 231.8 Grange Farm (Hayton)

Herdwick 221.8 Clea Hall (Bland)



A run of 49 lambs from
Messrs R Hall & Son, Inglewood Edge
Averaged £122.86 and their top pen of
5 lambs grossed at £129.5 for 41.2kgs





HOPE'S
AUCTIONEERS

www.hopesauction.co.uk

Livestock & General Auctions,
Surveyors & Land Agents

T: 016973 42202

E: auctioneers@hopesauction.co.uk

Hope's Auction Co. Ltd.

Syke Road, Wigton, Cumbria, CA7 9NS

PRIME EWES – 97

A nice entry of ewes and although easier, the quality forward would play a part.
Best ewes to £120 for D Jones, The Croft

Beltex £95 Broomhills Farm (Marrs) £94 Parkgate Hall (Peile)

Texel £120 £112 The Croft (Jones) £119 Prospect House (Hodgson) £114 Hudscales (Cowx) £110
£104 New House (Watson) £107 Broomhills Farm (Marrs) £105 Green Farm (Mattinson)

Suffolk £100 New House (Watson) £97 £90 Beech Tree Farm (Bell)

Mule £83 Greenah Villa (Rae) £81 Park End (Brown & Tyson)

RAMS

Dutch Texel £80 Mechi (Bowe)



Stay Connected   

Hope's Auction Company Limited – Registered in England: 052362.
Registered address: Syke Road, Wigton, Cumbria, CA7 9NS. VAT Reg. No. 256 4393 42.