



Tuesday 13th July, 2021

PRIME CATTLE – 24

Another super show of cattle and a trade to match proving long distance travel unnecessary to achieve results. A super show of handy weights to a top of 275.5pkg on two occasions, firstly for a 567kg Limousin from Ian Grainger, Kiln Close and then a 560kg Heifer from DA Harrison & Co, Hill House, and both purchased by Paul Harrison, King Street, Wigton. A further six in excess of 270pkg. Top gross £1731 for a 657kg Limousin Heifer from JJ Crichton, Loughrigg (263.5pkg) and purchased by Paul Harrison for the Wigton shop.

A superbly finished Native Bred Belted Galloway from JJ Crichton, Loughrigg, weighing 569kg grossed at £1436.73 (252.5pkg) and was purchased by RA & EJ Harrison for his Main Street Butchers Shop at Cockermouth

More cattle required every week to match growing demand please Contact David Bowman on 07721 616786.

HEIFERS - 22

Limousin 275.5 273.5 Kiln Close (Grainger) 275.5 259.5 243.5 Hill House (Harrison) 271.5 Allerby Hall (Miller) 269.5 258.5 253.5 248.5 East House (Tyson) 269.5 Nealhouse Farm (Studholme) 265.5 264.5 259.5 256.5 Greenhill Farm (Little) 263.5 Loughrigg (Crichton) 258.5 256.5 West Farm (Miller) 250.5 245.5 233.5 Cockbridge House (Tinniswood)

Belted Galloway 252.5 Loughrigg (Crichton)

BULLS - 2

Just a couple today to 187.5pkg for a Belted Galloway from I Grainger, Kiln Close and Black and Whites to 173.5pkg from the same home
Top gross £1104

Belted Galloway 187.5 Kiln Close (Grainger)

British Friesian 173.5 Kiln Close (Grainger)



Lot No 314 from Ian Grainger, Kiln Close. 275.5pkg purchased by Paul Harrison (RJ Harrison & Sons Ltd) for his King street Shop,



Lot No 318 from DA Harrison & Co, Hill House. 275.5pkg purchased by Tony Harrison (RA & EJ Harrison Ltd) for his Main Street Shop, Cockermouth





PRIME LAMBS – 1351

Hope's Auction Company sold 1351 sheep including 1208 Prime Lambs and 143 Cull Ewes.

Prime Lambs a fantastic show of quality lambs sold to a firm enquiry of buyers where all classes were sharper on the week. Many buyers left short of required numbers with a lack commercial first cross lambs present and many more of this type could have been sold. Overall average 283pkg SQQ 285p and £115 per head (+15p) well in front of any other local centres.

Sale topped at £172 for a tremendous 49kg meaty Texel from regular consignors D.A Harrison & Co, Hill House, Aldoth. Price per kg honours went to a very smart pen of 3 35.33kg Beltex selling to 368pkg from B Blandford & Sons, Netherton Farm, Ledbury.

32 Pens & 85 Lambs sold between £130 and £172

106 Pens & 377 Lambs sold in excess of £120 per head

55 Pens & 356 Lambs sold in excess of 300pkg

G N Bowe & Sons, Bothel Parks sold some very smart Texel lambs to a top of £152 for 42kg.

Adam Bell & Amy Bell, Thethwaite Farm sold a smart run of Beltex and Texel lambs to a top of £149 for a 44kg Beltex and £140 for a 40kg Beltex.

RE Miller, West Farm sold a pair of 41.5kg Beltex to £143 and a pen of 4 42kg to £137.

Messrs Blandford & Sons made the worthwhile trip up to Wigton from Herefordshire with a fantastic consignment of Beltex lambs selling to a top of £140 for a pair of 41.5kg and averaging 322.34pkg and £120 for 310 head.

W Storey, Limestone cottage sold some fantastic Beltex lambs to a top of £137 for 44kg.

Regular consignors M & L Peile, Holly Barn, Blencogo sold some smart lambs with a 48kg Beltex selling to £134 and a pen of 3 43kg Beltex to £123.

The Laurels Farm, Dundraw sold a great run of 28 Dutch Texel lambs topping at £131 for a pen of 3 42kg and averaging £119 per head.

William Gate, Low Aketon sold his first run of lambs for the season with a pen of 5 45kg Beltex selling to £130.

Wellington Farm, Aspatria sold a cracking run of 25 Texel and Black Texel lambs to a top of £130 for a pair of 41.5kg

D I Donaldson, 16 East Park, Crofton sold a smart run of 30 Texel lambs with a pen of 16 43kg selling to £126 and a pen of 11 42kg again to £126.

P D Wybergh, Borranshill sold a run of 24 smart Texel lambs to a top of £125 for 42kg and a pen of 7 42kg to £123.50 averaging £120 per head.

L F Raven, Priestcroft sold a pair of 42kg Texels to £121 and a pair of 46kg Texels to £127.50.





M & GS Nelson, Braithwaite Hall sold a smart pen of 5 42.8kg Millenium Blue lambs to £121.

JB & EJ Peile, Greystoke Castle, Penrith sold a penful of 31 41kg Texel cross Mule lambs to £108.50.

D. A Harrison & Co sold smart lightweight tup lambs with a pen of 38kg to £114.50 and a pen of 35kg selling to £107.

Messrs Bland, Clea Hall sold a penful of 39kg Cheviot lambs to £101.50.

All classes of lambs required each week, contact Rory Livesey 07827966377

Top Five Lambs Averages £: £132.00 for 11 from GN Bowe & Sons, Bothel Parks
£131.83 for 3 from Messrs JN Harrison & Sons, Downhall
£128.57 for 21 from Messrs RE Miller, West Farm
£128.45 for 10 from Mrs W Storey, Limestone Cottage
£128.00 for 5 from Jack Carr, Leesrigg

Top Five Lambs £: £172 for a 49kg from DA Harrison & Co, Hill House
£160 for a 47kg from RE Miller, West Farm
£152 for a 42kg from GN Bowe & Sons, Bothel Parks
£149 for a 44kg from Adam Bell, Thethwaite Farm
£146 for a 48kg from LJ Davidson, Halls Oven

Top Five Lambs Pkg: 368.0 for a trio of 35.3kg from B Blandford & Sons, Netherton Farm
361.9 for a 42kg from GN Bowe & Sons, Bothel Parks
353.7 for 15 35.2kg from B Blandford & Sons, Netherton Farm
351.0 for a 49kg from DA Harrison & Co, Hill House
350.0 for a 40kg from Adam Bell,
Thethwaite Farm

Per Head

Beltex £160 £143 £137 £124 £123 x 2 West Farm (Miller)
£149 £140 £134 £129 £127 Thethwaite Farm (Bell) £142
Hillside (Stoddart) £140 £132 £130 x 4 £128.5 £127 £126.5
£126 £125 £124.5 £123 £122 x 2 £121 £120 x 2 Netherton
Farm (Blandford) £137 £136 £133 £129 £125.5 £122
Limestone Cottage (Storey) £134 £123 £122 Holly Barn
(Peile) £132 £128 £121 x 2 Far Broom (Bell) £130 £127.5
£125 x 3 Low Aketon (Gate) £130 Midtown Farm (Bowe)
£125 Beech House (Whitfield)

Texel £172 £135 Hill House (Harrison) £152 £139 £133
£128.5 £125 Bothel Parks (Bowe) £146 £124 £122 Hall Oven
(Davidson) £138 £128.5 Leesrigg (Carr) £138 Allerby Hall
(Miller) £135.5 £124.5 Downhall (Harrison) £131 Prospect
House (Hodgson) £130 £126 £123.5 £123 Wellington Farm
(Harrington) £128.5 Croft House (Hunt) £127.5 £121.5 x 2



310 Prime Lambs from B Blandford & Sons, Netherton Farm averaged 322.34p/kg (£119.91)





12 Lambs from WW Gate,
Low Aketon averaged £126.88
per head

£121 £120 Priestcroft (Raven) £127 £126 £123 Westward Parks
(Brockbank) £126 x 2 East Park (Donaldson) £126 £120
Hudscapes (Cowx) £126 Mechi (Bowe) £125.5 Riggwood
(Harrington) £125 £123.5 x 2 £121 £120 Borranhill (Wybergh)
£124 x 2 Green Farm (Mattinson) £124 Blackburn Farm (Thorpe)
£122 High Hall (Thompson) £120 Newton Field Farm (Beaty) £120
High Blaitwaite (Spark) £120 Low Aketon (Gate)

Dutch Texel £131 £126 £125 £124.5 £119 The Laurels Farm
(Steel) £128 £116.5 £116 £115 Beck Farm (Harrison)

Blue Texel £119 x 2 Wellington Farm (Harrington)

Suffolk £122.5 Leesrigg (Carr) £120 Spring Hill (Hodgson) £112
Holly Barn (Peile)

Charollais £123 £111.5 Kiln Close (Grainger)

Rouge £106.5 Braithwaite Hall (Nelson)

Millenium

£121
Braithwaite Hall
(Nelson) £116

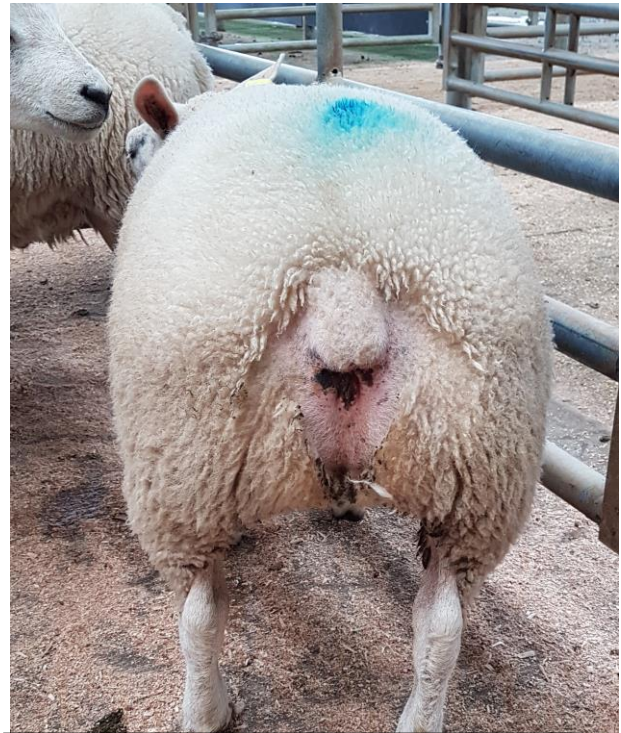
Croft House (Hunt)

Cheviot Mule £101.5 Clea Hall (Bland)

Per Kilo

Beltex 368.0 353.7 347.6 344.4 341.1 338.9 338.1
337.3 335.4 330.4 330.1 327.1 323.0 322.4 321.9
321.3 321.2 318.6 318.3 316.8 316.7 313.1 310.4
309.8 307.5 306.7 306.1 Netherton Farm
(Blandford) 350.0 338.6 326.8 307.3 Thethwaite
Farm (Bell) 344.6 340.4 326.2 310.0 West Farm
(Miller) 325.0 Midtown Farm (Bowe) 311.4 306.0
Limestone Cottage (Storey) 300.0 Far Broom
(Bell)

Texel 361.9 316.7 315.9 295.4 290.7 Bothel
Parks (Bowe) 351.0 305.7 304.2 301.3 298.2
297.4 283.6 Hill House (Harrison) 313.6 Allerby
Hall (Miller) 313.3 301.2 295.2 293.0 Wellington
Farm (Harrington) 308.0 303.7 Downhall (Harrison) 304.7 290.8 Prospect House (Hodgson) 304.2
Halls Oven (Davidson) 298.1 292.1 East Park (Donaldson) 297.6 294.0 291.8 Borranhill (Wybergh)



30 Lambs from DI Donaldson, East Park
averaged £124.40 per head (290.19pkg)





295.3 Riggwood (Harrington) 292.8 High Hall (Thompson) 292.7 289.3 285.9 283.9 282.6 Priestcroft (Raven) 292.0 Croft House (Hunt) 291.6 290.3 Blackburn Farm (Thorpe) 288.8 Rose Lea (Moore) 287.9 282.2 Westward Parks (Brockbank) 287.5 Leesrigg (Carr) 286.4 284.1 Prospect Farm (Hornsby) 286.4 283.8 Hudscales (Cowx) 285.1 Green Farm (Mattinson) 280.2 Midtown Farm (Bowe)

Dutch Texel 312.4 307.0 297.8 294.7 290.7 The Laurels Farm (Steel) 295.7 293.7 Beck Farm (Harrison)

Blue Texel 288.0 x 2 Wellington Farm (Harrington)

Suffolk 256.0 Hill House (Harrison) 254.5 Holly Barn (Peile) 249.6 Rose Farm (Hornsby) 247.5 Leesrigg (Carr) 235.3 Spring Hill (Hodgson)

Charollais 279.5 278.8 Kiln Close (Grainger)

Rouge 264.1 Braithwaite Hall (Nelson)

Millenium 282.7 Braithwaite Hall (Nelson) 252.2 Croft House (Hunt)

Cheviot Mule 259.3 Clea Hall (Bland)

PRIME EWES – 143

As expected a smaller show on the week and trade for the best and meated types continues at similar levels to a top of £165 for a Beltex from S & D Peile, Parkgate Hall. Horned sheep and leaner types hard to sell with limited requirement with reports of market saturation for these types.

Beltex £165 £163 £150 £142 £141 Parkgate Hall (Peile) £140 Beech House (Peile)

Texel £144 £135 £127 £126 High Laws House (Gilroy) £141 Thethwaite Farm (Bell) £141 £137 £134 Lowfield House (Robinson) £140 £139 £138 £134 £133 £127 Broomhills (Marrs) £136 Mechi (Bowe) £133 £126 Downhall (Harrison) £129 Prospect House (Hodgson) £126 Riggwood (Harrington) £125 Beech House (Whitfield)

Kerry £95 Fangs Farm (Clark)

Suffolk £133 Thethwaite Farm (Bell) £123 Mechi (Bowe) £117 Spring Hill (Hodgson) £110 Hill House (Harrison)

Mule £94 Broomhills (Marrs) £90 Riggwood (Harrington)

RAMS

Texel £119 Allerby Hall (Miller)

